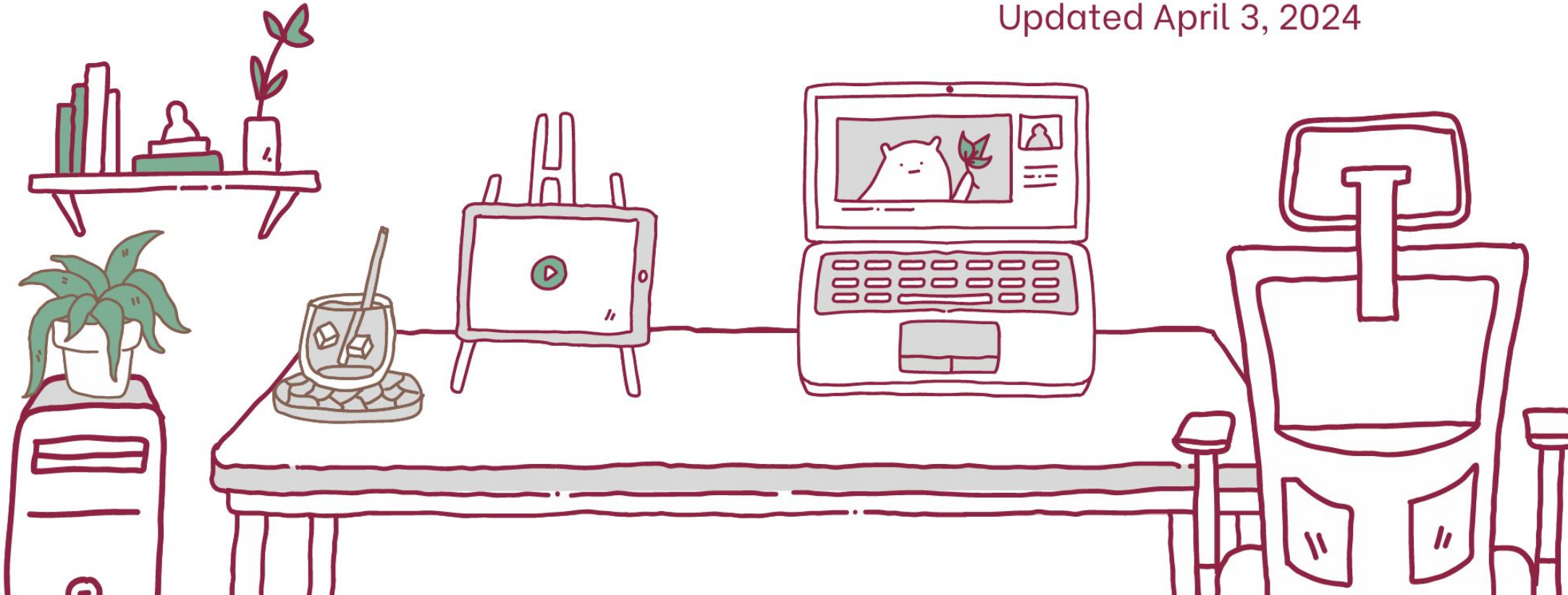


*Community*  
*Action*  
OF SOUTHEAST IOWA

# Employee Directory

Updated April 3, 2024



All locations (including WIC Clinic's and Head Start) are on our website here: <https://caofseia.org/about-us/locations/>

## **DES MOINES COUNTY**

### **Central Office**

2850 Mt Pleasant St, Suite 108  
Burlington, IA 52601  
(319) 753-0193 Fax (319) 753-0687



### **Des Moines County Community Action Center**

700 Jefferson St  
Burlington, IA 52601  
(319) 753-2893 Fax (319) 753-0849

### **Des Moines County WIC**

801 South Roosevelt  
Burlington, IA 52601  
(319) 754-8283 Fax (319) 754-8283

### **Burlington Head Start Preschool and Early Head Start**

700 South Starr Ave  
Burlington, IA 52601  
(319) 752-5692 Fax (319) 209-2108

## **HENRY COUNTY**

### **Tolson Community Action Center and Head Start**

1303 West Washington  
Mount Pleasant, IA 52641  
(319) 385-2310 Fax (319) 385-2877

### **Glenwood Head Start (Opening Fall 2024)**

302 West Madison St  
Mount Pleasant, IA 52641  
(319) 201-1560 Fax (319) 201-1559

## **LEE COUNTY**

### **Eichacker Community Action Center and Head Start**

3433 Ave O  
Fort Madison, IA 52627  
(319) 372-4471 Fax (319) 372-4476

### **Marie Tallarico Community Action Center and Head Start**

220 South 22<sup>nd</sup>  
Keokuk, IA 52632  
(319) 524-6383 Fax (319) 524-3017

### **Richardson School Head Start & Early Head Start**

1020 34<sup>th</sup> St  
Fort Madison, IA 52627  
HS: (319) 372-5462 Fax (319) 372-2038  
EHS: (319) 372-2038

## **LOUISA COUNTY**

### **Louisa County Community Action Center**

202 East Access St, Suite D  
Columbus Junction, IA 52738  
(319) 728-2314 Fax (319) 728-7510

## **MUSCATINE COUNTY**

### **Muscatine County WIC**

1507 Plaza Place  
Muscatine, IA 52761  
(563) 264-0855



First Name	Last Name	Title	Location	Work Phone	E-Mail
<b>Administration</b>					
Amy	Mapel	Accounts Payable Clerk	Central Office	(319) 753-0193	amy.mapel@caofseia.org
Jen	Smith	Accounting Clerk/Receptionist	Central Office	(319) 753-0193	jen.smith@caofseia.org
Kalisha	Lutz	Office Manager	Central Office	(319) 753-0193	Kalisha.lutz@caofseia.org
Kimberly	Babington	Human Resources Director	Central Office	(319) 753-0193	Kimberly.babington@caofseia.org
Laurey	Gray	Accountant	Central Office	(319) 753-0193	laurey.gray@caofseia.org
Rachel	Albrecht	Planning Director	Central Office	(319) 753-0193	rachel.albrecht@caofseia.org
Sarah	Gutting	Finance Director	Central Office	(319) 753-0193	sarah.gutting@caofseia.org
Sheri	Wilson	Executive Director	Central Office	(319) 753-0193	sheri.wilson@caofseia.org
<b>CSBG</b>					
Cheryl	Bloom	Housing Specialist/Family Specialist	Central Office/Louisa	(319) 753-0193	cheryl.bloom@caofseia.org
Dawn	Farmer	Family Development Specialist	Eichacker Center	(319) 372-4471	Dawn.farmer@caofseia.org
Deni	McClinton	Center Receptionist	Tallarico Center	(319) 524-6383	deni.mcclinton@caofseia.org
Joan	Wegener	Center Receptionist	Tolson Center	(319) 385-2310	Joan.wegener@caofseia.org
Kelly	Neff	Processing Specialist	Central Office	(319) 753-0193	kelly.neff@caofseia.org
Kim	Fletchall	Family Development Specialist	Tallarico Center	(319) 524-6383	kimberly.schafer@caofseia.org
Kim	Thompson	Lead Specialist	Des Moines Co Center	(319) 753-2893	kim.thompson@caofseia.org
Lisa	Nafziger	Center Director	Central Office	(319) 753-0193	lisa.nafziger@caofseia.org
Melissa	Privia	Program Coordinator	Central Office	(319) 753-0193	Melissa.privia@caofseia.org
Patty	Keagle	Family Development Specialist	Tolson Center	(319) 385-2310	patty.keagle@caofseia.org
Salina	Hicks	Center Receptionist	Neighborhood Center	(319) 753-2893	Salina.hicks@caofseia.org
Shelby	Miller	Family Development Specialist	Des Moines Co Center	(319) 753-2893	shelby.miller@caofseia.org
Stacy	White	Family Development Specialist	Des Moines Co Center	(319) 753-2893	stacy.white@caofseia.org
Yolanda	Villasenor	Center Receptionist	Louisa Co Center	(319) 728-2314	Yolanda.villasenor@caofseia.org



First Name	Last Name	Title	Location	Work Phone	E-Mail
<b>Early Childhood</b>					
Tamee	DeCoursey	Program Coordinator	Central Office	(319) 753-0193	tamee.decoursey@caofseia.org
<b>Early Head Start</b>					
Alyssa	Rose	Lead Teacher II	Marie Tallarico Center	(319) 524-6383	Alyssa.rose@caofseia.org
Ashley	Brink	Teacher I	Corse Center	(319) 752-5692	ashley.brink@caofseia.org
Brandi	Ferrell	Teacher I	Tallarico Center	(319) 524-6383	brandi.ferrell@caofseia.org
Brenda	Reynolds	Teacher II	Corse Center	(319) 752-5692	brenda.reynolds@caofseia.org
Calli	Leppert	Teacher I	Tolson Center	(319) 385-2310	Calli.leppert@caofseia.org
Debbie	Payne	Family Development Specialist	Corse Center	(319) 752-5692	debbie.payne@caofseia.org
Derra	Martin	Teacher I	Corse Center	(319) 752-5692	derra.martin@caofseia.org
Diane	Weldon	Teacher II	Corse Center	(319) 752-5692	diane.weldon@caofseia.org
Heather	Huston	Teacher I	Corse Center	(319) 752-5692	heather.huston@caofseia.org
Jasmine	Vandusen	Teacher I	Richardson Mobile	(319) 372-5462	Jasmine.vandusen@caofseia.org
Kaden	Fisk	Teacher I	Tolson Mobile	(319) 385-2310	kaden.fisk@caofseia.org
Kassie	Petty	Lead Teacher III	Tallarico Center	(319) 524-6383	kassie.petty@caofseia.org
Kaylin	Ryner	Teacher I	Corse Center	(319) 752-5692	kaylin.ryner@caofseia.org
Maegan	McCoy	Lead Teacher III	Richard Mobile	(319) 372-5462	Maegan.mccoy@caofseia.org
Megan	Kelley	Teacher II	Corse Center	(319) 752-5692	megan.kelley@caofseia.org
Melissa	Romine	Teacher I	Tolson Center	(319) 385-2310	Melissa.romine@caofseia.org
Monica	Maddox	Lead Teacher II	Tolson Mobile	(319) 752-5692	monica.maddox@caofseia.org
Nephteria	Tucker	Teacher I	Corse Center	(319) 752-5692	Nephteria.tucker@caofseia.org
Nicolle	Drummer	Teacher I	Corse Center	(319) 752-5692	nicolle.drummer@caofseia.org
Renee	Lynch	Family Development Specialist	Tallarico Center	(319) 524-6383	renee.lynch@caofseia.org
Shawna	Bowling	Teacher I	Corse Center	(319) 752-5692	shawna.bowling@caofseia.org
Taja	Drain	Teacher II	Corse Center	(319) 752-5692	taja.drain@caofseia.org



Employees Listed by Program then First Name

April 2, 2024

<b>First Name</b>	<b>Last Name</b>	<b>Title</b>	<b>Location</b>	<b>Work Phone</b>	<b>E-Mail</b>
<b>Tiffany</b>	Wheeler	Teacher I	Marie Tallarico Center	(319) 524-6383	Tiffany.wheeler@caofseia.org
<b>Tina</b>	Loring	Teacher III	Tallarico Center	(319) 524-6383	tina.loring@caofseia.org
<b>Tuty</b>	Horne	Lead Teacher III - Center	Corse Center	(319) 752-5692	tuty.horne@caofseia.org
<b>Vanessa</b>	Beckon	Lead Teacher I	Marie Tallarico Center	(319) 524-6383	Vanessa.beckon@caofseia.org

## FaDSS

<b>Brandon</b>	Forthenberry	Family Development Specialist	Des Moines Co Center	(319) 753-2893	brandon.forthenberry@caofseia.org
<b>Joy</b>	Szewczyk	Program Coordinator	Central Office	(319) 753-0193	joy.szewczyk@caofseia.org
<b>Leah</b>	Godar	Family Development Specialist	Des Moines Co Center	(319) 753-2893	Leah.godar@caofseia.org
<b>Masi</b>	Hirschy	Family Development Specialist	Tolson Center	(319) 385-2310	masi.hirschy@caofseia.org

## Head Start

<b>Abby</b>	Belba	Lead Teacher I	Corse Center	(319) 752-5692	Abby.belba@caofseia.org
<b>Alivia</b>	Williams	Teacher I-Float	Corse Center	(319) 752-5692	Alivia.williams@caofseia.org
<b>Aliyah</b>	Netherton	Cook	Tolson Center	(319) 385-2310	Aliyah.netherton@caofseia.org
<b>Amy</b>	Vandiver	Health Services Coordinator	Central Office	(319) 753-0193	Amy.vandiver@caofseia.org
<b>Carrie</b>	Helling	Family Development Specialist	Des Moines Co Center	(319) 753-2893	Carrie.helling@caofseia.org
<b>Cheryl</b>	Irvin	Teacher II	Tallarico	(319) 524-6383	Cheryl.irvin@caofseia.org
<b>Christy</b>	White	Lead Teacher II	Tolson Center	(319) 385-2310	Christy.white@caofseia.org
<b>Christy</b>	Pfadenhauer	Cook	Corse Center	(319) 752-5692	Christy.pfadenauer@caofseia.org
<b>Dawn</b>	Cazin	Education Manager	Central Office	(319) 753-0193	Dawn.cazin@caofseia.org
<b>Denise</b>	Mahoney	Cook	Eichacker Center	(319) 372-4471	Denise.mahoney@caofseia.org
<b>Denise</b>	Osbon	Lead Teacher III	Tallarico Center	(319) 524-6383	denise.osbon@caofseia.org
<b>Diana</b>	Hopp	Lead Teacher III	Richardson Mobile	(319) 372-5462	Diana.hopp@caofseia.org
<b>Dominique</b>	Prete	Health Specialist	Multi	(319) 524-6383	Dominique.prete@caofseia.org
<b>Dunn</b>	Shayla	Teacher I	Eichacker Center	(319) 372-5462	Shayla.dunn@caofseia.org





Employees Listed by Program then First Name

April 2, 2024

<b>First Name</b>	<b>Last Name</b>	<b>Title</b>	<b>Location</b>	<b>Work Phone</b>	<b>E-Mail</b>
<b>Heather</b>	Gadbaw	Professional Development Coordinator	Central Office	(319) 753-0193	Heather.gadbaw@caofseia.org
<b>Heather</b>	Harris	Family Development Specialist	Eichacker Center	(319) 372-4471	heather.harris@caofseia.org
<b>Jennifer</b>	Ramin	Lead Teacher III	Corse Center	(319) 752-5692	jennifer.ramin@caofseia.org
<b>Jennifer</b>	Webb	Cook	Corse Center	(319) 752-5692	Jennifer.webb@caofseia.org
<b>Jeremy</b>	Hollenbeck	Teacher III	Corse Center	(319) 752-5692	jeremy.hollenbeck@caofseia.org
<b>Jill</b>	Hulett	Family Services Coordinator	Central Office	(319) 753-0193	jill.hulett@caofseia.org
<b>Katelyn</b>	Christensen	Teacher I	Corse Center	(319) 752-5692	Katelyn.christensen@caofseia.org
<b>Kathryn</b>	Mumma	Teacher II Associate	Corse Center	(319) 752-5692	Kathryn.mumma@caofseia.org
<b>Kathy</b>	Scott	Education Coordinator	Corse Center/Tolson	(319) 752-5692	kathy.scott@caofseia.org
<b>Kaylee</b>	Osbon	Teacher I	Tallarico Center	(319) 524-6383	kaylee.osbon@caofseia.org
<b>Keli</b>	Morgan	Family Development Specialist	Tolson Center	(319) 385-2310	keli.morgan@caofseia.org
<b>Kelly</b>	Dunlavey	Temp - Lead Teacher I	Tallarico Center	(319) 524-6383	kelly.dunlavey@caofseia.org
<b>Kelsey</b>	Mendenhall	Lead Teacher III	Tallarico Center	(319) 524-6383	kelsey.mendenhall@caofseia.org
<b>Krysta</b>	Young	Teacher I - Float	Eichacker Center	(319) 372-4471	krysta.young@caofseia.org
<b>LillyAnn</b>	Adediran	Teacher I Associate	Tolson Center	(319) 385-2310	Lillyann.adediran@caofseia.org
<b>Linda</b>	Garmoe	Receptionist	Corse Center	(319) 752-5692	linda.garmoe@caofseia.org
<b>Lorna</b>	Hood	Lead Teacher III	Tolson Center	(319) 385-2310	lorna.hood@caofseia.org
<b>Lorri</b>	Wagner	Teacher II - Float	Tallarico Center	(319) 524-6383	lori.wagner@caofseia.org
<b>Lyz</b>	Lowman	Cook	Tallarico Center	(319) 524-6383	lyzz.lowman@caofseia.org
<b>Maggie</b>	Kindig	Nurse	Corse Center	(319) 752-5692	maggie.kindig@caofseia.org
<b>Mallory</b>	Lopez	Education Coordinator	Tallarico Center	(319) 524-6383	mallory.becker@caofseia.org
<b>Mary</b>	Davis	Lead Teacher III	Corse Center	(319) 752-5692	mary.davis@caofseia.org
<b>Matt</b>	LeClere	Program Director	Central Office	(319) 753-0193	matthew.leclere@caofseia.org
<b>Melenda</b>	McCampbell	Lead Teacher III	Corse Center	(319) 752-5692	melenda.mccampbell@caofseia.org
<b>Michelle</b>	Stafford	Facilities/Transportation Assistant	Central Office	(319) 753-0193	michelle.stafford@caofseia.org



Employees Listed by Program then First Name

April 2, 2024

<b>First Name</b>	<b>Last Name</b>	<b>Title</b>	<b>Location</b>	<b>Work Phone</b>	<b>E-Mail</b>
<b>Mindy</b>	Rich	Teacher II	Tolson Center	(319) 385-4523	mindy.rich@caofseia.org
<b>Nancy</b>	Jacobs	Teacher II	Corse Center	(319) 752-5692	nancy.jacobs@caofseia.org
<b>Pamela</b>	Fowler	Lead Teacher III	Eichacker Center	(319) 372-4471	Pamela.fowler@caofseia.org
<b>Paula</b>	Hitchcock	Cook Aide / Substitute	Tallarico Center	(319) 524-6383	paula.hitchcock@caofseia.org
<b>Peggy</b>	Rader	Family Development Specialist	Tallarico Center	(319) 524-6383	peggy.rader@caofseia.org
<b>Randi</b>	Waterman	Coach & Disabilities Coordinator	Central Office	(319) 753-0193	randi.waterman@caofseia.org
<b>Richard</b>	Marsh	Information Technology Specialist	Central Office	(319) 753-0193	richard.marsh@caofseia.org
<b>Robbin</b>	Price	Cook Aid/Dishwasher	Corse Center	(319) 752-5692	Robbin.price@caofseia.org
<b>Shairese</b>	Conway	Teacher I-Float	Corse Center	(319) 752-5692	Shairese.conway@caofseia.org
<b>Sherry</b>	Hempen	Teacher II	Richardson Mobile	(319) 372-5462	sherry.coffey@caofseia.org
<b>Susie</b>	Dahl Mattoon	Administrative Specialist	Central Office	(319) 753-0193	susan.mattoon@caofseia.org
<b>Tonya</b>	Hunold	Teacher I - Float	Tallarico Center	(319) 524-6383	tonya.hunold@caofseia.org

## Weatherization

<b>Alex</b>	Deppe	Crew Worker	Central Office	(319) 753-0193	Alex.deppe@caofseia.org
<b>Blake</b>	Christofferson	Crew Worker	Central Office	(319) 753-0193	Blake.christofferson@caofseia.org
<b>Jeremy</b>	Beelman	Auditor/Inspector	Central Office	(319) 753-0193	jeremy.beelman@caofseia.org
<b>Jim</b>	Blackwell, Jr.	Program Director	Central Office	(319) 753-0193	jim.blackwell@caofseia.org
<b>Keith</b>	Wilson	Crew Worker	Central Office	(319) 753-0193	keith.wilson@caofseia.org
<b>Marc</b>	Lutz	Coordinator/Auditor	Central Office	(319) 753-0193	marc.lutz@caofseia.org
<b>Steve</b>	Mattoon	Crew Supervisor	Central Office	(319) 753-0193	steve.mattoon@caofseia.org
<b>Terry</b>	Wheatley	Crew Worker	Central Office	(319) 753-0193	Terry.wheatley@caofseia.org
<b>Tom</b>	Richert	Temporary Inspector	Central Office	(319) 753-0193	tom.richert@caofseia.org
<b>Troy</b>	Magel	Crew Supervisor	Central Office	(319) 753-0193	troy.magel@caofseia.org



First Name	Last Name	Title	Location	Work Phone	E-Mail
<b>WIC</b>					
<b>Everick</b>	Alicea Valle	Breastfeeding Peer Counselor	Muscatine WIC	(563) 264-0855	Alicea.valle@caofseia.org
<b>Bethany</b>	Fleenor	Clerk Specialist I	Central Office	(319) 753-0193	beth.fleenor@caofseia.org
<b>Celesta</b>	Burton	Nurse	Muscatine WIC	(563) 264-0855	celesta.burton@caofseia.org
<b>Christine</b>	O'Brien	Program Director	Central Office	(319) 753-0193	christine.obrien@caofseia.org
<b>Diana</b>	Dobson	Nurse	Central Office	(319) 753-0193	diana.dobson@caofseia.org
<b>Emily</b>	Schinstock	Nutritionist	Central Office	(319) 753-0193	emily.schinstock@caofseia.org
<b>Grisel</b>	Colon-Mendoza	Clerk Specialist I	Muscatine WIC	(563) 264-0855	grisel.cmendoza@caofseia.org
<b>Jackie</b>	Hood	Breastfeeding Peer Counselor	Central Office	(319) 753-0193	jackie.hood@caofseia.org
<b>Jennifer</b>	Miller	Nurse	Muscatine WIC	(563) 264-0855	jennifer.miller@caofseia.org
<b>Kaysee</b>	Phelps	Breastfeeding Peer Counselor	Central Office	(319) 753-0193	kaysee.phelps@caofseia.org
<b>Lisa</b>	Kerns	Clerk Specialist II	Central Office	(319) 753-0193	lisa.kerns@caofseia.org
<b>Sandra</b>	Mabeus	Nutritionist	Central Office	(319) 753-0193	sandra.mabeus@caofseia.org
<b>Sarah</b>	Leichty	Nutritionist & Breastfeeding Peer Counselor Coordinator	Central Office	(319) 753-0193	sarah.leichty@caofseia.org