



Community Action OF SOUTHEAST IOWA

2022 ANNUAL REPORT

**HELPING PEOPLE
CHANGING LIVES**

Nutrition
Education
Housing



FROM OUR EXECUTIVE DIRECTOR

Community Action of Southeast Iowa had a successful 2022. Several of our programs, such as Energy Assistance (LIHEAP) received a substantial increase in funding. We were able to get these funds out to people in need of assistance. Other programs such as Weatherization and FaDSS have been able to provide services in the homes of our clients. Head Start has faced many barriers keeping the classrooms open which has impacted many children at a crucial point of their development and learning. We are proud to be a part of the Community Action network in Iowa which was one of the top states in the nation to implement the new federal Low-Income Home Water Assistance Program.

We thank all of our community partners who have helped us serve people in southeast Iowa. A special thanks to our dedicated staff who have worked hard to provide services to over 13.5% of the population. We could not have accomplished all we did without the support and guidance of our Board of Directors and community partners.



Sheri Wilson
Executive Director
JD, CCAP, NCRT

MISSION

Community Action of Southeast Iowa is dedicated to alleviating the conditions and causes of poverty by building partnerships and strengthening people through quality services.

VISION

For people in southeast Iowa to have the opportunity to reach their maximum potential.

56 YEARS

of programs and services helping people and changing lives in southeast Iowa.

1 OF 16 IN IOWA

We are a local non-profit but a part of a larger network of Community Action Agencies across Iowa and the nation.

4 MAIN COUNTIES

Des Moines County
Lee County
Louisa County
Henry County

120 EMPLOYEES

who share and accomplish our mission every day in our 20+ programs and services.



SOUTHEAST IOWA

About 32% of the population struggles with economic poverty. - ACS 2015-19, 200% FPL

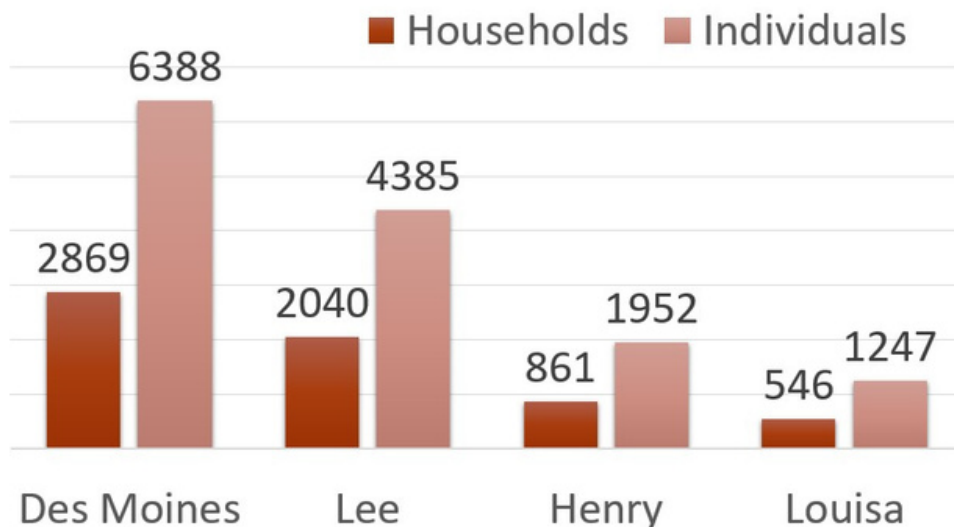
In fiscal year 2022 we served 13% of the population.

We touched the lives of
14,033 Individuals in 6,397 Households.

2022 FUNDING

Head Start/Early Head Start	\$4,398,234
LIHEAP & LIHWAP Programs	\$6,121,279
WIC Vouchers	\$1,933,503
Weatherization Assistance	\$1,045,081
Child Care Food Program	\$694,204
Community Services Block Grant	\$600,196
Family Development	\$383,366
Total Agency Expenditures	\$16,862,407

CLIENTS BY COUNTY SERVED



THE YEAR IN NUMBERS

4,498

Households heated with a utility payment through the Low Income Home Energy Assistance Program

2,304

Individuals helped maintaining water service through Low Income Home Water Assistance Program

126

Households supported with Family Development and Self Sufficiency

69

Home childcare providers supported with Child and Adult Care Food Program

48

Homes weatherized

5,175

Food boxes provided through our food pantries

4,105

Individuals served in WIC in our main counties plus Muscatine County (Washington County added 10/1/22)

337

Households assisted with rent

72

Furnaces repaired or replaced

61

Households remained in their homes with Senior Home Repair

41

Children provided Preschool Scholarships

More detailed information and reports available on our website:
<https://caofseia.org/about-us/reports/>

PROGRAMS AND SERVICES

All agency programs and services are aligned with our mission to alleviate the conditions and causes of poverty. They focus in three areas: Nutrition, Housing, and Education.

Education

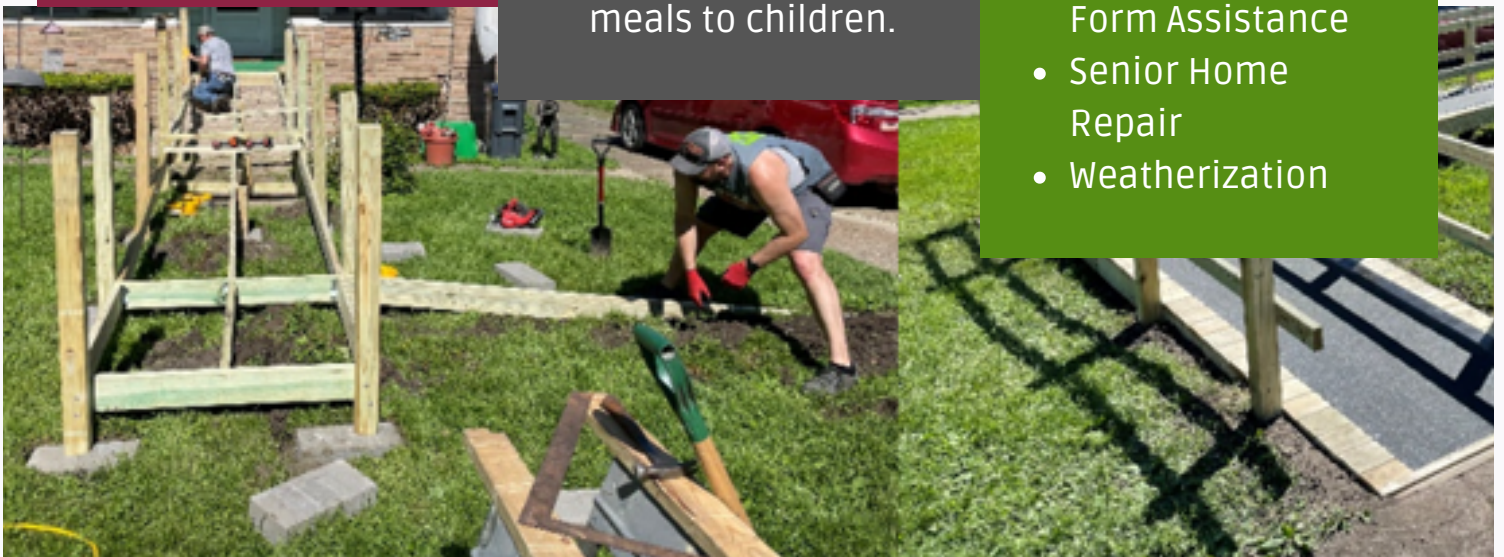
- Head Start
- Early Head Start
- Preschool Scholarships
- Family Development and Self Sufficiency (FaDSS)
- Employment Counseling
- General Information and Referral
- Employment and Budget Counseling

Nutrition

- Special Supplemental Nutritional Program for Women, Infants and Children (WIC)
- Food Pantries in Burlington, Fort Madison, Mt Pleasant, Columbus Junction, & Keokuk
- Child and Adult Food Care Program (CACFP) to reimburse childcare providers for serving nutritious meals to children.

Housing

- Furnace Repair and Replacement
- Homeless Assistance
- Eviction Assistance
- Utility Assistance
- Low Income Home Energy Assistance Program (LIHEAP)
- Low Income Home Water Assistance Program (LIHWAP)
- Rent Assistance
- Rent Reimbursement Form Assistance
- Senior Home Repair
- Weatherization



Program details, eligibility, and more can be found on our website: caofseia.org or by calling one of our centers.

WORDS FROM OUR CLIENTS

It has allowed me to be financially stable, and put my finances in other areas to keep afloat. - Response 9.59

I think Community Action of Southeast Iowa does a wonderful job of helping families in crisis. - Response 4.21

They have helped me make it this winter. I went from a two income family to one and without their help I don't know how I would have made it. - Response 9.231

It has taught me how to be self-sufficient and budget and a better way to discipline. - Response 9.213

I have been given some peace of mind and some hope that everything will turn out okay! - Response 9.152

[Head start] has helped me grow as a positive parent and help in the community. - Response 11.7

I have had the best outcome with Community Action, they have helped keep my kids in a safe home. - Response 9.14



OBJECTIVES

Head Start and Early Head Start are programs where children and families are educated, challenged and empowered to embrace their potential for success in life. One child, one family at a time.

Head Start is a federally funded, non-profit program dedicated to providing quality school readiness and family support services to those of low income.

Parent Involvement

We encourage family members to be involved in any and all aspects their child's experiences throughout the school year.

Families plan and participate in special events at the centers. Family Nights are events that local center committees plan to support family learning and togetherness.

Families are involved in the decision-making process as members of their local Center Committees where they make decisions about the program.

School Readiness

Assessments help establish a baseline, identify goals, and identify areas of growth for each individual child.

Kindergarten transition activities help prepare children to transition from our program to a school district kindergarten classrooms.

Family Specialists assist families in: finding kindergarten round-ups, learning how to advocate for their child, activities to help prepare for this transition, and more.

Research shows attendance patterns and habits formed when children are in preschool and kindergarten continue later in their school careers; these same patterns are indicators of future success in school and conversely school drop-out rates

We are committed to:

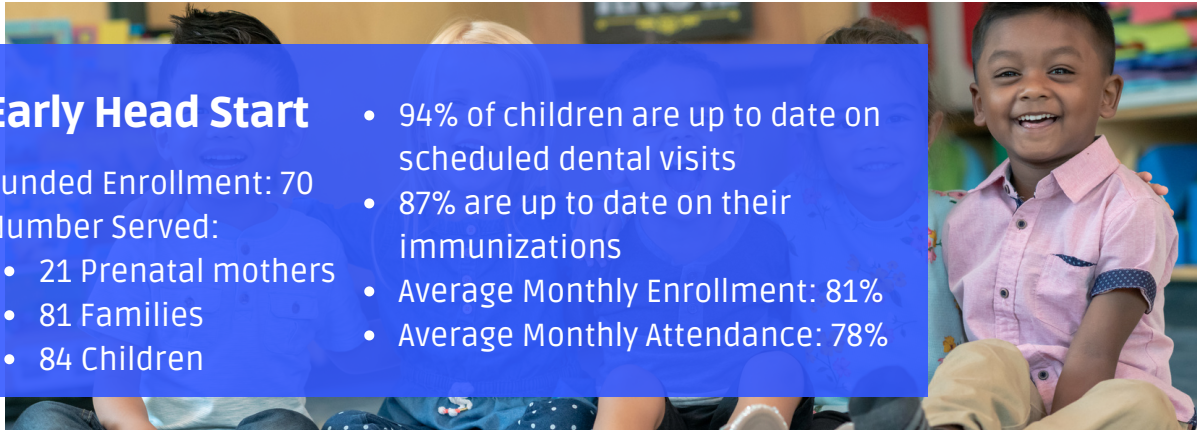
- Excellence in the preparation of our children for school and life.
- Ensuring all students have an equal opportunity to learn.
- Each student having access to an effective teacher.

Early Head Start

Funded Enrollment: 70
Number Served:

- 21 Prenatal mothers
- 81 Families
- 84 Children

- 94% of children are up to date on scheduled dental visits
- 87% are up to date on their immunizations
- Average Monthly Enrollment: 81%
- Average Monthly Attendance: 78%

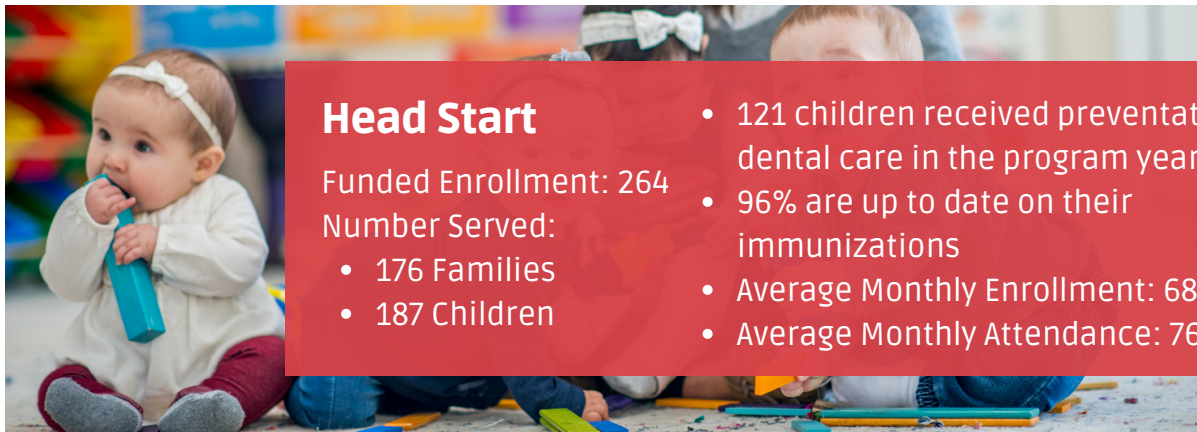


Head Start

Funded Enrollment: 264
Number Served:

- 176 Families
- 187 Children

- 121 children received preventative dental care in the program year
- 96% are up to date on their immunizations
- Average Monthly Enrollment: 68%
- Average Monthly Attendance: 76%



Children 0 - 4 in Poverty in Southeast Iowa

There are 1,511 children below 100% Federal Poverty Level (FPL)
-2016-20 American Community Survey

Head Start/Early Head Start served 18% of those children (271)





**Head Start
& Early Head Start**
Community Action of Southeast Iowa

Program Year: September 2021 – August 2022

FEDERAL HEAD START GRANT FUNDING		Proposed Budget	Expenditures
	Personnel	\$1,994,043	\$1,994,043
	Fringe Benefits	\$981,478	\$981,478
	Travel	\$3,984	\$3,984
	Supplies	\$66,628	\$66,628
	Contractual	\$32,500	\$32,500
	Other	\$303,571	\$303,571
	Indirect Costs	\$421,333	\$421,333
	Total	\$3,803,537	\$3,803,537

Our audit, completed by Meriwether, Wilson & Company, P.L.C., showed 100% compliance!

ADDITIONAL FUNDING	Covid ARP	\$399,631
	COVID CRRSA	\$100,524
	CACFP	\$146,375
	CACFP COVID Supplement	\$14,462
	DHS COVID Stipend	\$17,000
	ECI Lee and Van Buren County	\$13,242
	Donated Space, Services, and Materials	\$417,775
	Miscellaneous Monetary Donations	\$611

Volunteers and donors provide crucial support for our programs. Professionals donate their time in their specialties in classrooms, maintenance, and in various areas across the program.

Donated items come from individuals, community groups, and local businesses. Contact us about how you can contribute this coming year to support local children and communities.



Our Head Start program is in compliance in all areas.

In our review, we were specifically commended for our:

- Management, oversight, and governance within our program.
- Curricular alignment, strategies to ensure school readiness, and supporting teachers to implement the curriculum.
- Ensuring delivery of high-quality health services and maintaining safe, healthy environments.
- Purposeful approach to develop families' self-sufficiency and strengthening their parenting skills.
- Attendance initiative to promote attendance as a pathway to improve long-term successful outcomes for children.
- Budget development and revision processes.

We continue to work on staffing and raising staff teacher credentials. This is an area of concern regarding designing quality education and child development program services.



LOCATIONS



Central Office

2850 Mt Pleasant St, Suite 108
Burlington, IA 52601
319-753-0193

Community.Action@caofseia.org
<https://caofseia.org/>

Centers are open:

Monday - Friday 8:00am - 4:30pm



Des Moines County Neighborhood Center

700 Jefferson St,
Burlington, IA 52601
319-753-2893



Tolson Community Action Center

1303 West Washington St.
Mt. Pleasant, IA 52641
319-385-2310



Eichacker Community Action Center

3433 Avenue O,
Fort Madison, IA 52627
319-372-4471



Marie Tallarico Community Action Center

220 S. 22nd St,
Keokuk, IA 52632
319-524-6383



Louisa County Community Action Center

202 E. Access Road, Suite D/PO Box 29
Columbus Junction, IA 52738
319-728-2314
Open Tuesday & Wednesday

Head Start and WIC location details on our website: [https://caofseia.org/about-us/locations/Equal Employment Opportunity/Affirmative Action Employer](https://caofseia.org/about-us/locations/Equal-Employment-Opportunity/Affirmative-Action-Employer)
2022 Community Action of Southeast Iowa