

# Fiscal Year 2022 Annual Review



*Community*  
**Action**  
OF SOUTHEAST IOWA

# Mission:

**Community Action of Southeast Iowa is dedicated to alleviating the conditions and causes of poverty by building partnerships and strengthening people through quality services.**



*Community  
Action*  
OF SOUTHEAST IOWA

Our **VISION** is for people in southeast Iowa to have the opportunity to reach their maximum potential.



*Community*  
**Action**  
OF SOUTHEAST IOWA

# History



- Community Action Agencies began by an act of legislation as a part of the Economic Opportunity Act of 1964 by President Lyndon Johnson. This was a part of his War on Poverty.
- Community Action of Southeast Iowa began in 1966.
- We are 1 of 16 in Iowa and 1 of over 1,000 across the nation.
- Each Community Action is different and responsive to local needs.
- Funding is provided through federal, state and local grants as well as local donations.

*Community*  
**Action**  
OF SOUTHEAST IOWA



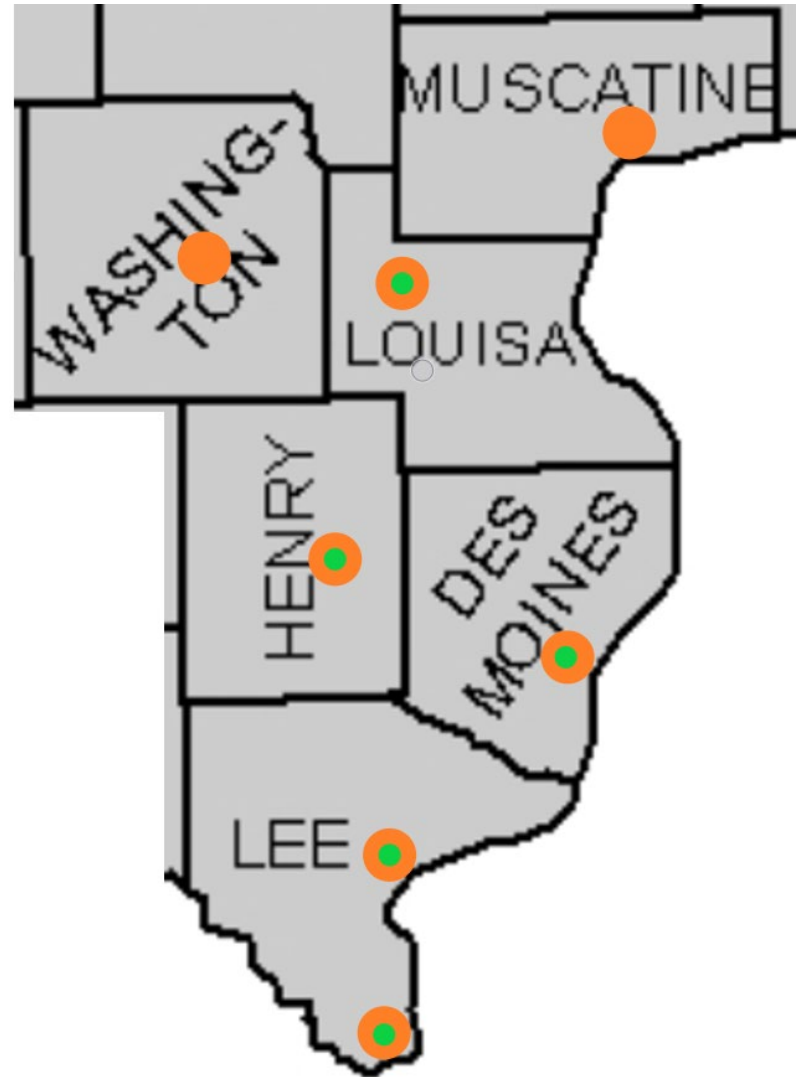
# Leadership

- We have a tripartite board of **12** local representatives. They are Low-Income Representatives, Elected Officials, and Community Representatives.
- Board President: Barbara Welander
- Executive Director: Sheri Wilson
- Management Staff consists of **6** Program Directors.

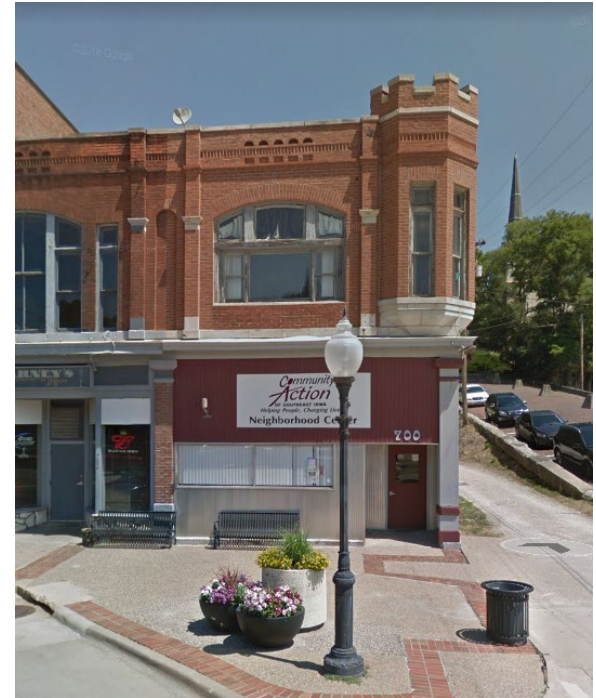


# Locations

- We have several locations throughout southeast Iowa
  - 5 Local Centers
  - 3 Head Start specific locations
    - Mt Pleasant to open fall 2023
- WIC Offices are in
  - 4 Churches
  - 3 Office buildings
    - Washington County added 10/1/2022
- Home Visitors travel throughout the area



# BURLINGTON



**Head Start  
at Corse**

**Neighborhood  
Center**



**WIC**

**Community  
Action  
OF SOUTHEAST IOWA**



# FORT MADISON



**Eichacker**



**Richardson Head Start**





**Louisa County**

# Marie Tallarico Keokuk



**Tolson Mt Pleasant**



# LOCATIONS



## Central Office

2850 Mt Pleasant St, Suite 108  
Burlington, IA 52601  
319-753-0193

Community.Action@caofseia.org  
<https://caofseia.org/>

Centers are open:  
Monday - Friday 8:00am - 4:30pm

## Des Moines County Neighborhood Center

700 Jefferson St,  
Burlington, IA 52601  
319-753-2893

## Tolson Community Action Center

1303 West Washington St.  
Mt. Pleasant, IA 52641  
319-385-2310

## Eichacker Community Action Center

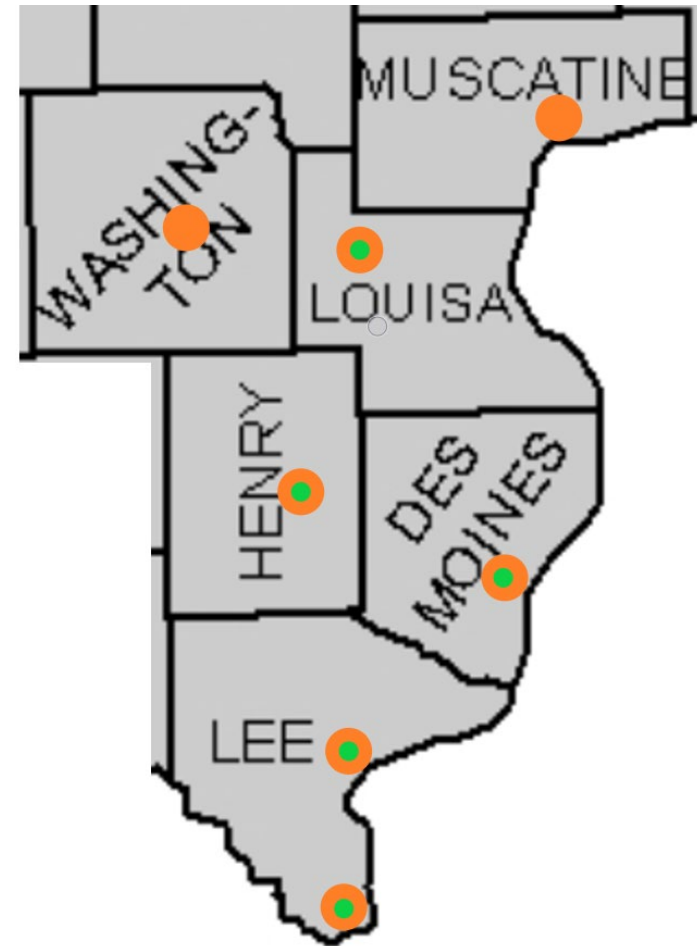
3433 Avenue O,  
Fort Madison, IA 52627  
319-372-4471

## Marie Tallarico Community Action Center

220 S. 22nd St,  
Keokuk, IA 52632  
319-524-6383

## Louisa County Community Action Center

202 E. Access Road, Suite D/PO Box 29  
Columbus Junction, IA 52738  
319-728-2314  
Open Tuesday & Wednesday



*Community*  
**Action**  
OF SOUTHEAST IOWA



# Community Action Head Start (HS) and Early Head Start (EHS) Locations

Main Head Start [Facebook Page](#)

## Des Moines County

Burlington Head Start Preschool & Early Head Start – In Corse School

700 South Starr Ave

Burlington, IA 52601

319-752-5692

## Burlington Head Start Facebook

## Henry County

Tolson Community Action HS/EHS

1303 West Washington

Mt Pleasant, IA 52641

319-385-2310

## Tolson Head Start Facebook

## Lee County

Eichacker Center

3433 Avenue O

Fort Madison, IA 52627

319-372-4471

Richardson HS/EHS

1020 34th St

Fort Madison, IA 52627

319-372-5462 / 319-372-2038

## Eichacker and Richardson Head Start Facebook

Keokuk HS/EHS

210 South 22nd Street

Keokuk, IA 52632

319-524-6383

## Marie Tallarico Head Start Facebook



Burlington Head Start at Corse School



Keokuk Head Start Marie Tallarico

# WIC Clinic Locations

- Burlington Clinics #4502 & 4506  
801 S. Roosevelt  
Burlington IA 52601
- Keokuk Clinic #4503  
St Paul United Church of Christ  
2030 Plank Road  
Keokuk IA 52632
- Mt Pleasant Clinic #4505  
Presbyterian Church  
902 South Walnut  
Mt Pleasant IA 52641
- Fort Madison Clinic #4507  
First Christian Church  
608 10th Street  
Ft Madison IA 52627
- Columbus Junction Clinic #4509  
United Methodist Church  
517 2nd Street  
Columbus Junction IA 52738
- Muscatine Clinics #4510 & 4511  
Muscatine Office  
1507 Plaza Place  
Muscatine IA 52761
- Washington County WIC Clinic #4513  
Federation Bank Building  
Washington County Public Health  
110 North Iowa, Suite 500  
Washington IA 52353
- To schedule an appointment at any of our WIC locations call the Community Action of Southeast Iowa central office 319-209-2850. To contact WIC by text: 319-759-4322
- To contact the Iowa WIC Office call 1-800-532-1579



# Poverty In Southeast Iowa

- **32%** of the population is at 200% Federal Poverty Level (FPL) or below
  - That's **\$27,180** for one person and \$55,500 for a family of four.
- **13%** are at 100% FPL
- **49%** of public school students are eligible for free or reduced lunch (at 185% FPL or below)

- ACS 2015-2019

- NCES 2020-21

# 2022 Annual Federal Poverty Guidelines

All states (except Alaska and Hawaii)

Household Size	100% of Poverty	125% of Poverty	175% of Poverty	185% of Poverty	200% of Poverty
	Head Start & Early Head Start	CSBG	Energy Assistance	WIC	Weatherization, COVID-19
1	\$13,590	\$16,988	\$23,783	\$25,142	\$27,180
2	\$18,310	\$22,888	\$32,043	\$33,874	\$36,620
3	\$23,030	\$28,788	\$40,303	\$42,606	\$46,060
4	\$27,750	\$34,688	\$48,563	\$51,338	\$55,500
5	\$32,470	\$40,588	\$56,823	\$60,070	\$64,940
6	\$37,190	\$46,488	\$65,083	\$68,802	\$74,380
7	\$41,910	\$52,388	\$73,343	\$77,534	\$83,820
8	\$46,630	\$58,288	\$81,603	\$86,266	\$93,260
+ Additional	\$4,720				

SOURCE: Federal Register Notice, January 12, 2022  
Health and Human Services Poverty Guidelines

<https://aspe.hhs.gov/topics/poverty-economic-mobility/poverty-guidelines>

Figure 3

**Minimum wage is not enough; sometimes median wage is not, either**

Self-sufficiency wage for selected family types compared with Iowa median and minimum wage



Note: For couples without children, the young couple is age 25 and the older couple is 52. Where the family has one child the child is 2 to 3 years old. For married couples with two children their ages are 3-4 and 6-11; with three children, one is age 6-11, two are age 12-16. Single parent with two children has two children ages 6 to 11.

# Southeast Iowa Fiscal Year 2022



- Total area population: 104,187
- We served **14,033** individuals in **6,397** households
- That's **13.5%** of the population of southeast Iowa.
- We serve anyone of low-income

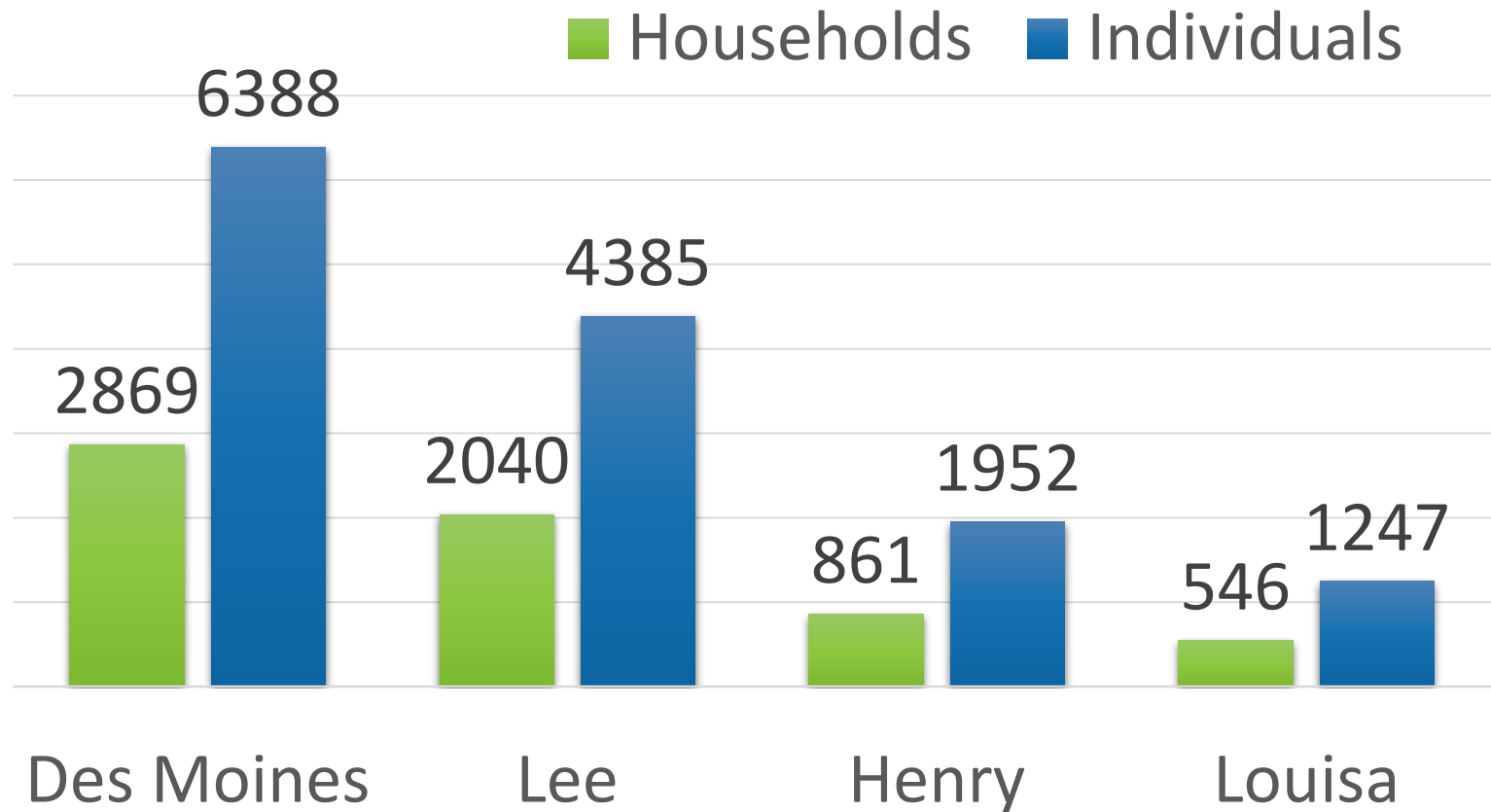
*Community*  
**Action**  
OF SOUTHEAST IOWA



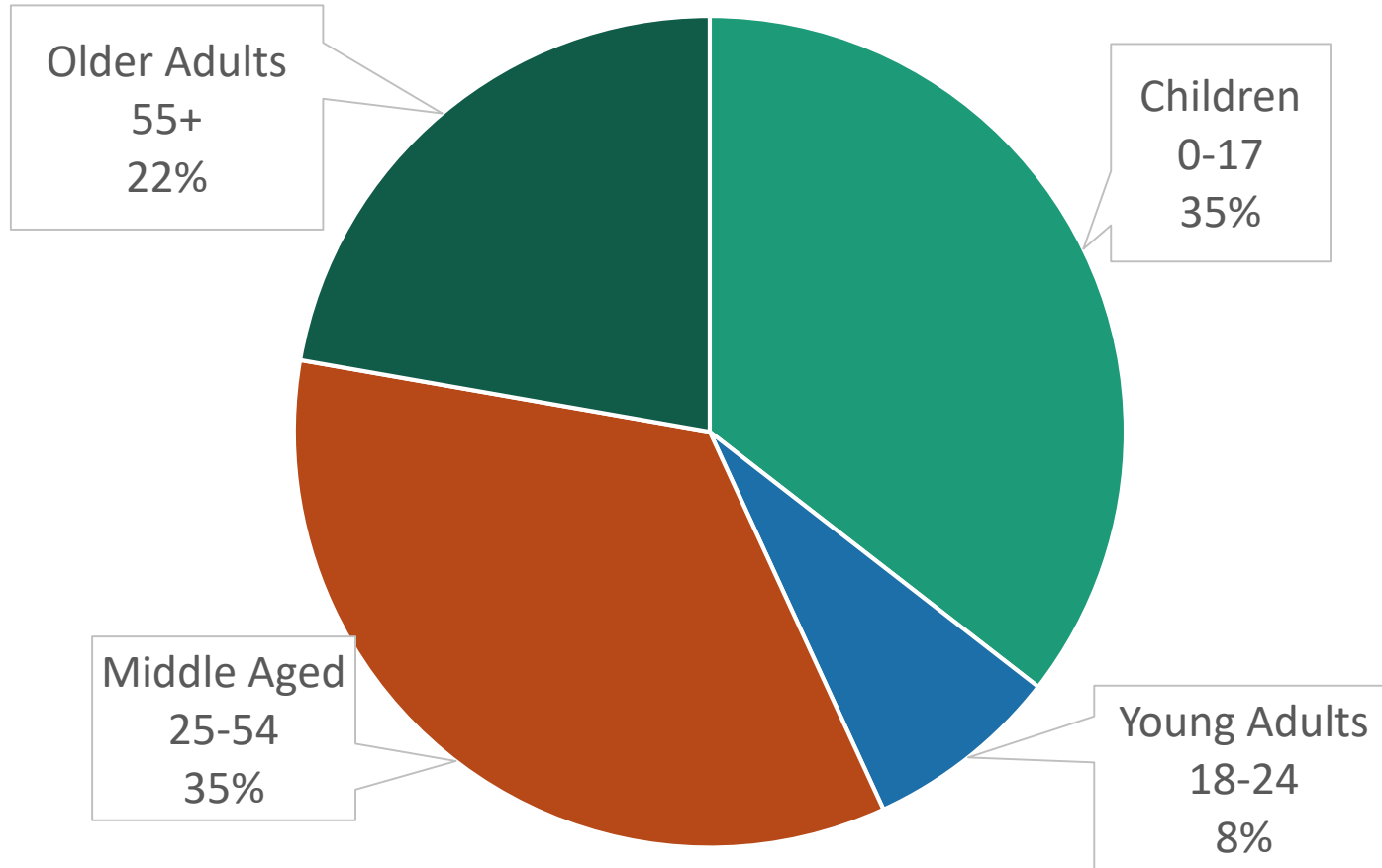
**Some  
demographic  
data of those  
we serve:**



# Clients by County Served FY22



# Ages of those served



-FY 2022 NIFCAP

# Hispanic Ethnicity

County	Hispanic Population	Hispanic Clients
Louisa	15.95%	27.5%
Henry	4.97%	6.6%
Des Moines	3.36%	5.2%
Lee	3.66%	4.9%
	Iowa: 6.17%	All Clients: 7% (1,029)

- American Community Survey 2016-2020
- NIFCAP, FY 2022





# Racial Demographics of Clients Served FY 2022

II. Race	Number of Individuals
a. American Indian or Alaska Native	46
b. Asian	105
c. Black or African American	1927
d. Native Hawaiian and Other Pacific Islander	22
e. White	10879
f. Other	83
g. Multi-race (two or more of the above)	971
h. Unknown/not reported	0
<b>TOTAL (auto calculated)</b>	<b>14033</b>

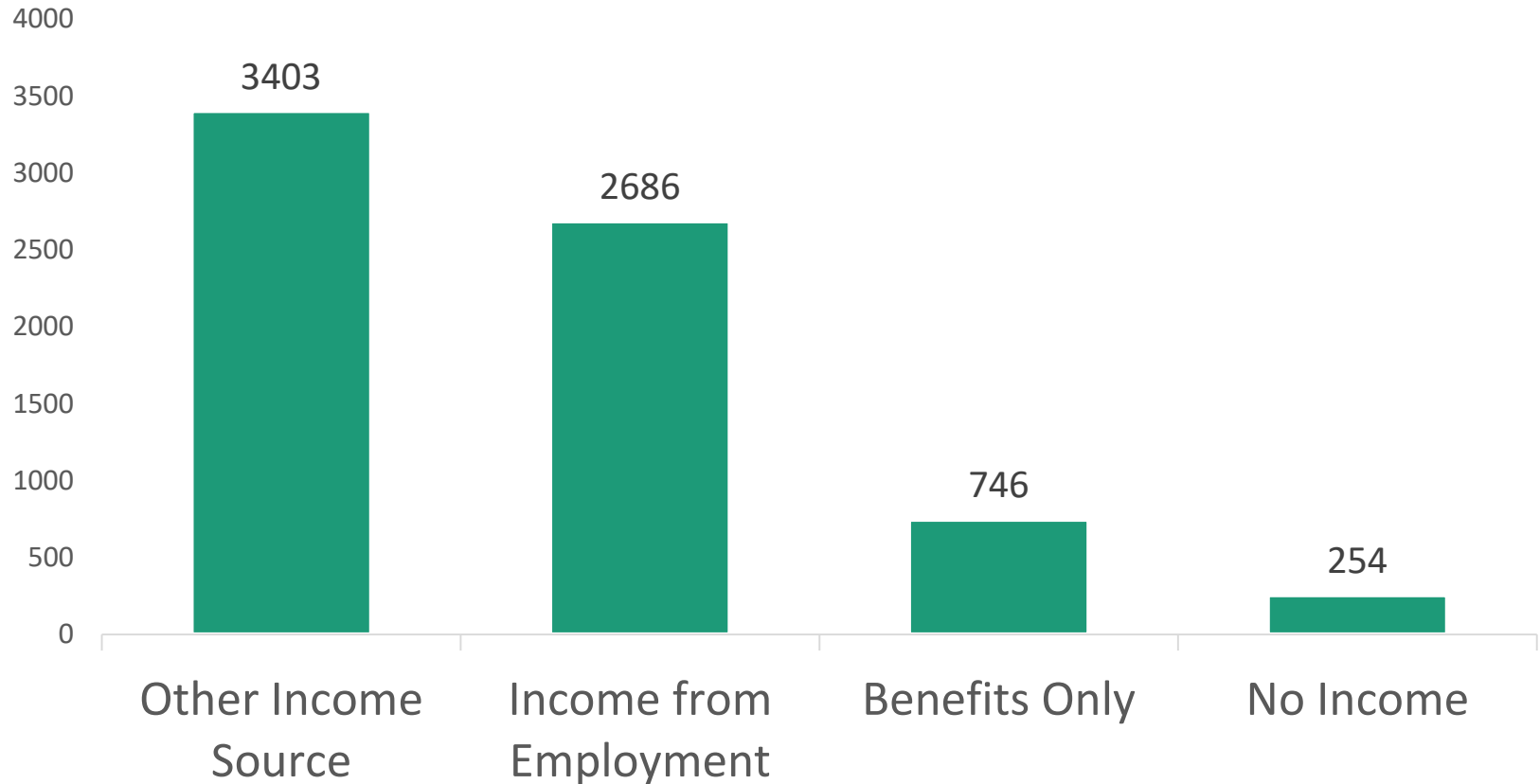
7.55% of the total population are minorities

-American Community Survey 2014-2018

22.5% of our clients were minorities in FY2021 & 2022



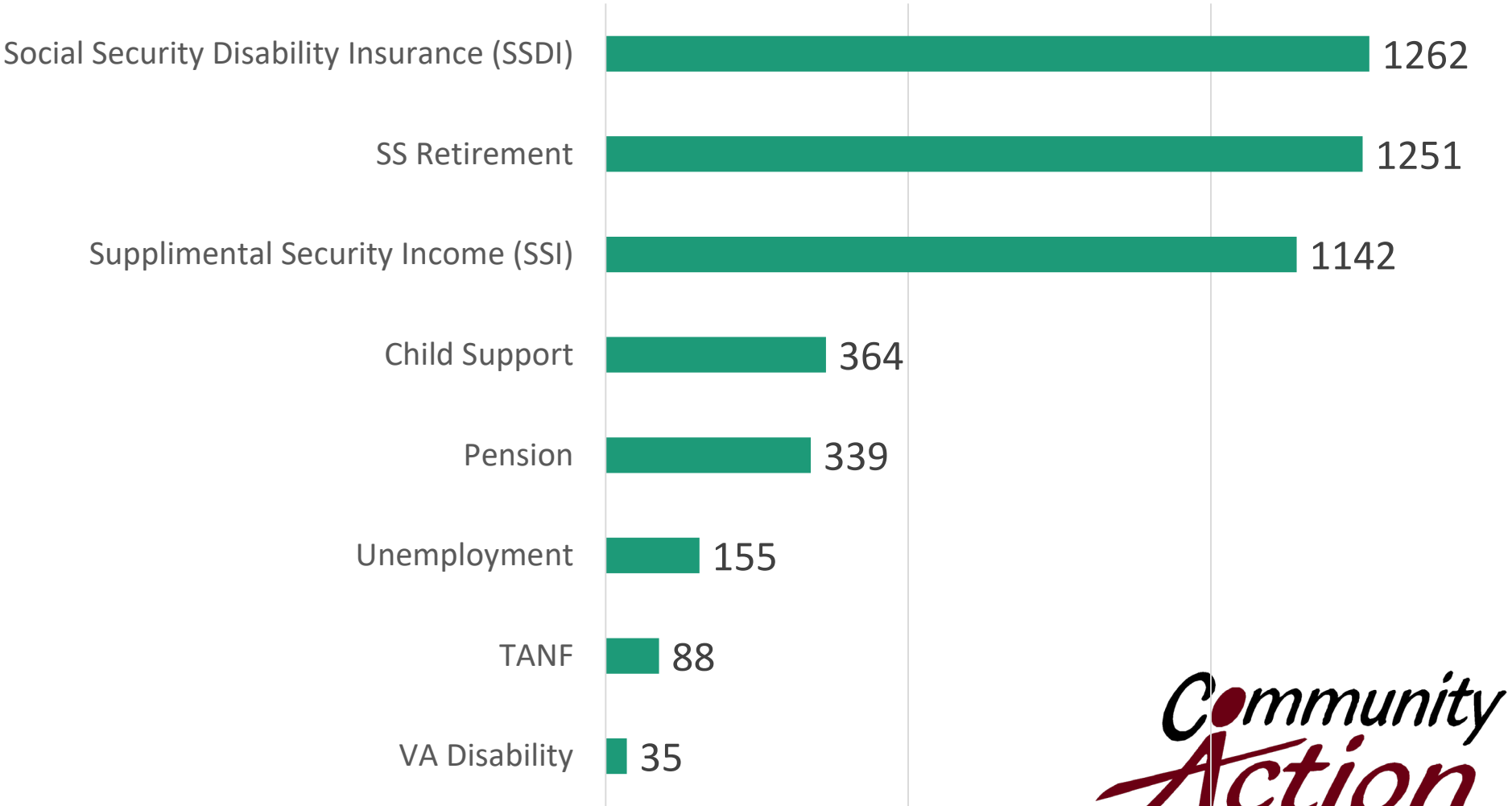
# Source of Household Income



-FY 2022 NIFCAP



# Other Household Income Sources

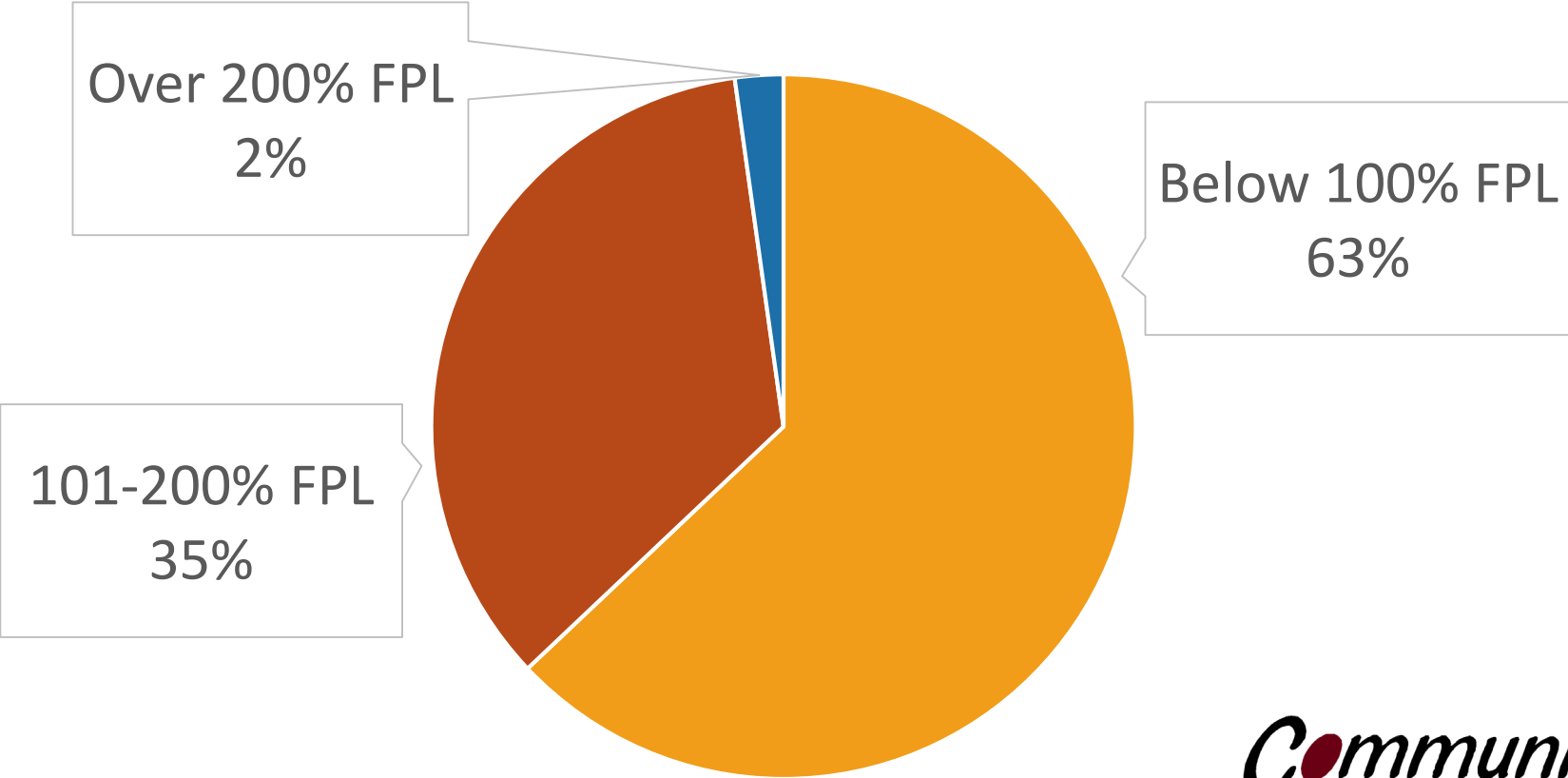


-FY 2022 NIFCAP



# Level of Household Income

Percentage of Federal Poverty Level (FPL)

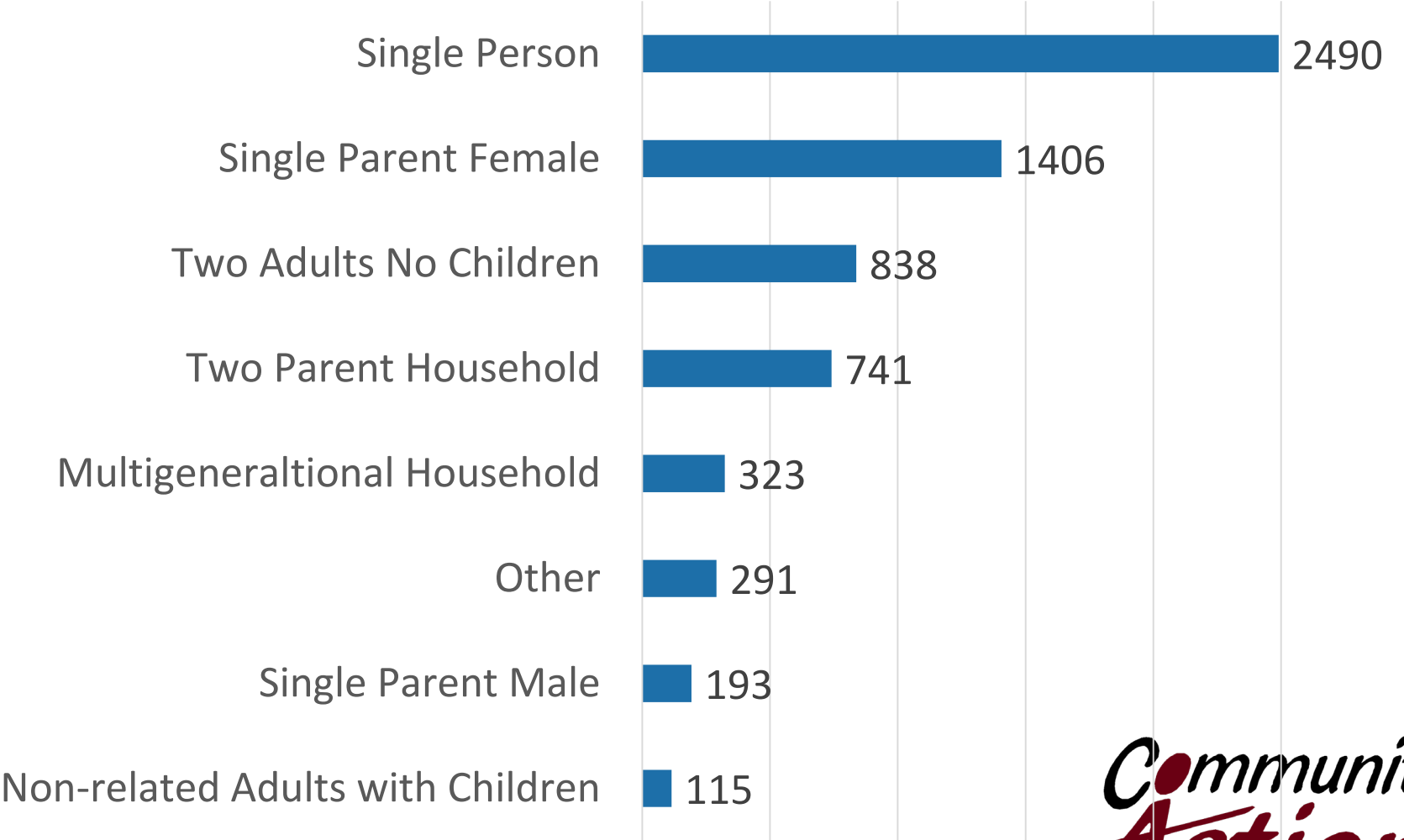


-FY 2022 NIFCAP





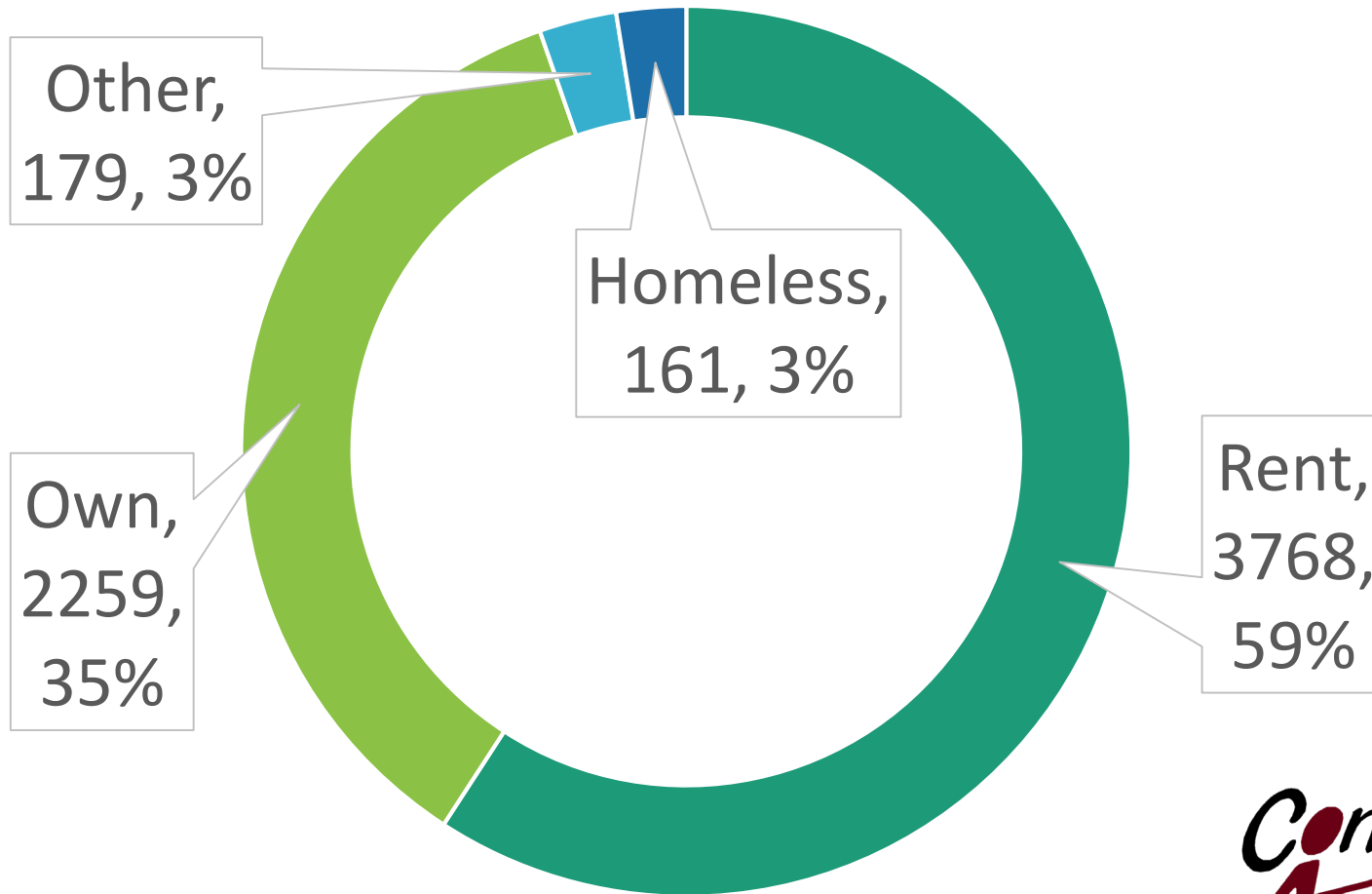
# Household Type



-FY 2022 NIFCAP



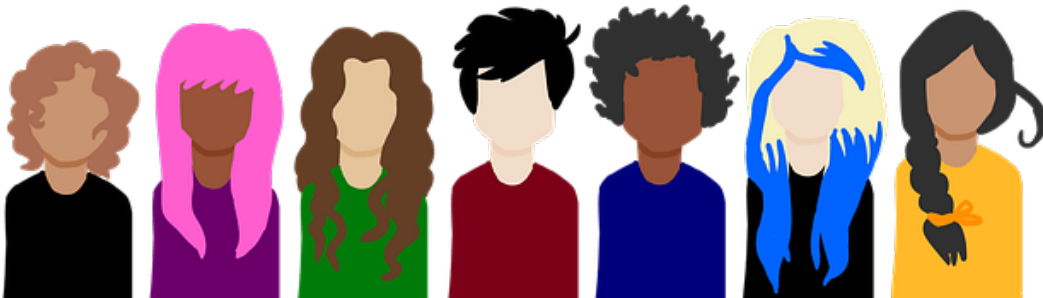
# Client's Housing Type



-FY 2022 NIFCAP

# Other Client Demographics

- Males – 43.6%
- Females – 56.4%
- Other gender – 0.028% (4 people)
- Veterans – 3.3% (460 individuals)
- Households receiving some kind of disability:
  - 2,505 Duplicated = 17.9% of individuals
  - In Iowa 11.8% of population over 5 has a disability



# FISCAL YEAR 2022

<b>Head Start/Early Head Start</b>	<b>\$4,398,234</b>
<b>LIHEAP &amp; LIHWAP Programs</b>	<b>\$6,121,279</b>
<b>WIC Vouchers</b>	<b>\$1,933,503</b>
<b>Weatherization Assistance</b>	<b>\$1,045,081</b>
<b>Child Care Food Program</b>	<b>\$694,204</b>
<b>Community Services Block Grant</b>	<b>\$600,196</b>
<b>Family Development</b>	<b>\$383,366</b>
<b>Total Agency Expenditures</b>	<b>\$16,862,407</b>

In our Fiscal Year 2022 Agency Audit there were no findings nor compliance issues.

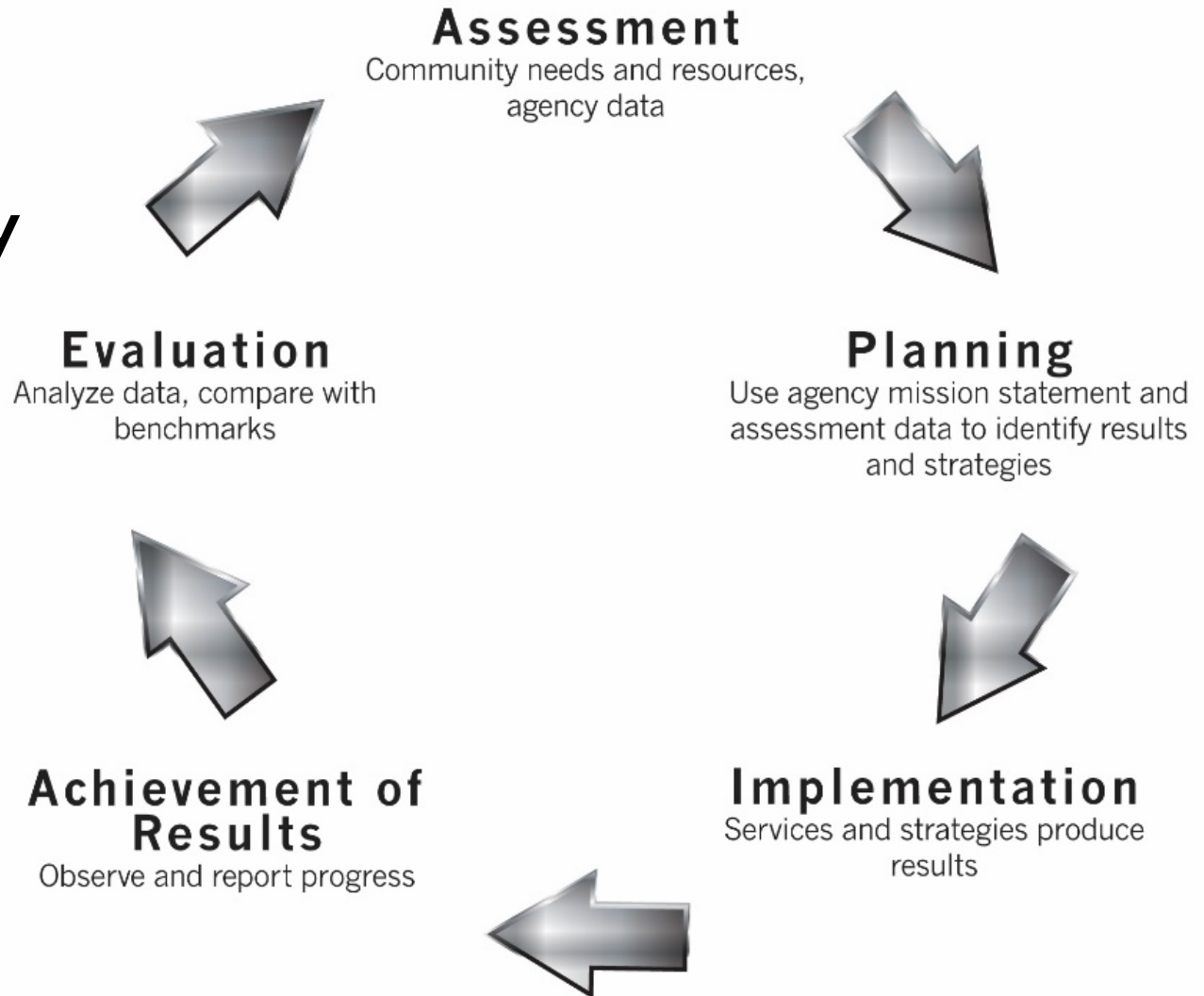




# The Results Oriented Management and Accountability Cycle

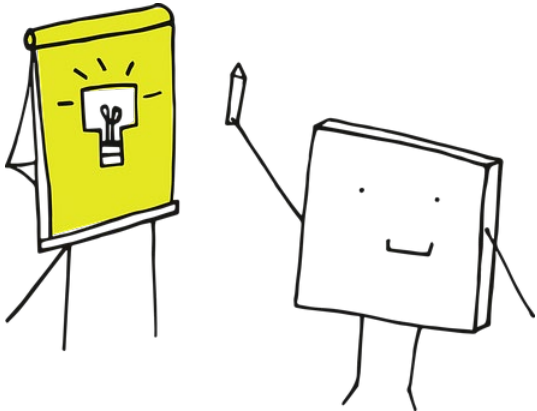
---

All  
Community  
Action  
Agencies  
follow  
ROMA



# Programs and Services

- 20+ Programs and services to alleviate the conditions and causes of poverty
- 3 Main Focus Areas
  - Nutrition
  - Housing
  - Education



# Nutrition Programs

- Special Supplemental Nutritional Program for Women, Infants and Children (WIC)
- Food Pantries in each county
- Child and Adult Care Food Program (CACFP)



# Special Supplemental Nutrition Program for Women, Infants and Children (WIC)



- **4,105** Individuals Served
- **\$1,933,503** provided in WIC vouchers
- Prenatal & post partum women
- Children 0-5
- WIC supports 53% of all infants born in the US

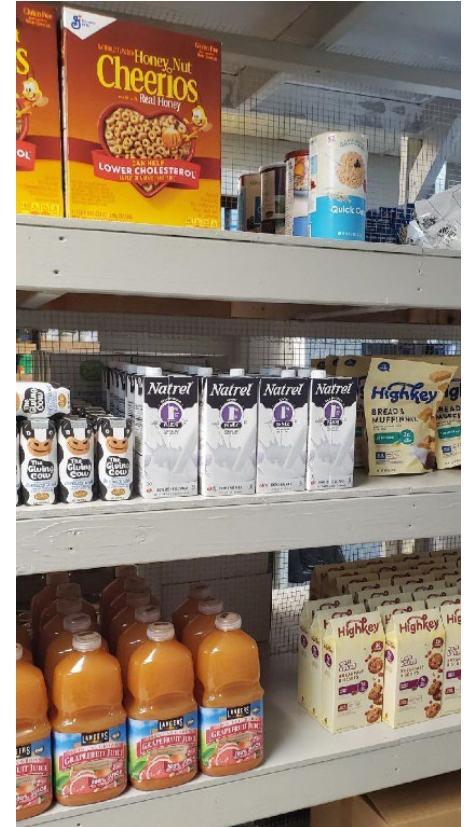


*Community*  
**Action**  
OF SOUTHEAST IOWA



# Food Pantries

- **5,175** Food Boxes given
- Located at each center:
  - Burlington
  - Mt Pleasant
  - Columbus Junction
  - Keokuk
  - Fort Madison



**Community  
Action**  
OF SOUTHEAST IOWA

# Food Gift Cards

- **219** households were provided food gift cards
- Not a regular program, but provided by generous donors



# Child and Adult Food Care Program (CACFP)

**55,999** Healthy Meal Reimbursements

**50,505** Snack Reimbursements

to **69** Home Providers  
and **4** Day Care Centers



*Community*  
**Action**  
OF SOUTHEAST IOWA

# Housing Programs



- Rent Assistance
  - Homeless/Eviction Assistance
    - Emergency Solutions Grant (ESG)
    - Emergency Rent Assistance (ERA2)
  - Rent Reimbursement Form Assistance
  - Tenant Based Rental Assistance (TBRA) – ended 4/2022
- Utility Assistance
  - Low Income Home Energy Assistance Program (LIHEAP)
  - Low Income Home Water Assistance Program (LIHWAP)
  - Emergency Utility Assistance
- Weatherization
- Furnace Repair & Replacement
- Senior Home Repair



# Rent Assistance

- **337** households with **743** individuals
- Eviction prevention
- Deposit payments
- Rent payments
  
- ESG – 23 Households



# Rent Reimbursement

- We assist clients in completing the forms
- **68** Households



*Community*  
**Action**  
OF SOUTHEAST IOWA

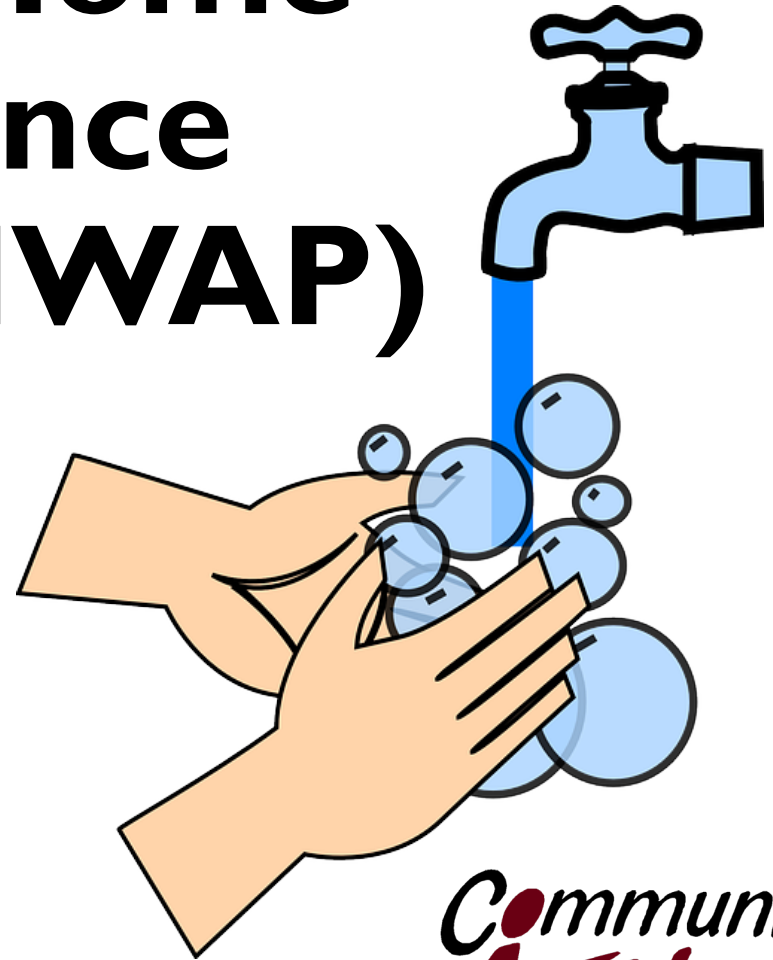
# Low Income Home Energy Assistance Program (LIHEAP)

- **4,498** households with **10,124** individuals were provided a payment to their utility



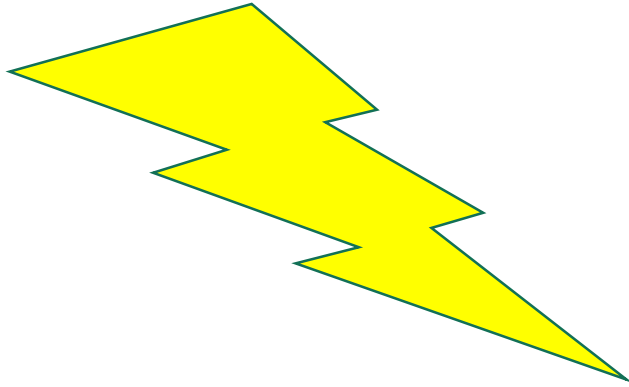
# Water Assistance: Low Income Home Water Assistance Program (LIHWAP)

- **807** households with **2,304** individuals
- Helped maintaining water service or reconnection



*Community*  
**Action**  
OF SOUTHEAST IOWA

# 48 Homes Weatherized



**\$467**



**Average yearly savings** in energy costs for a home that has been weatherized through our program in Southeast Iowa

**Community  
Action**  
OF SOUTHEAST IOWA



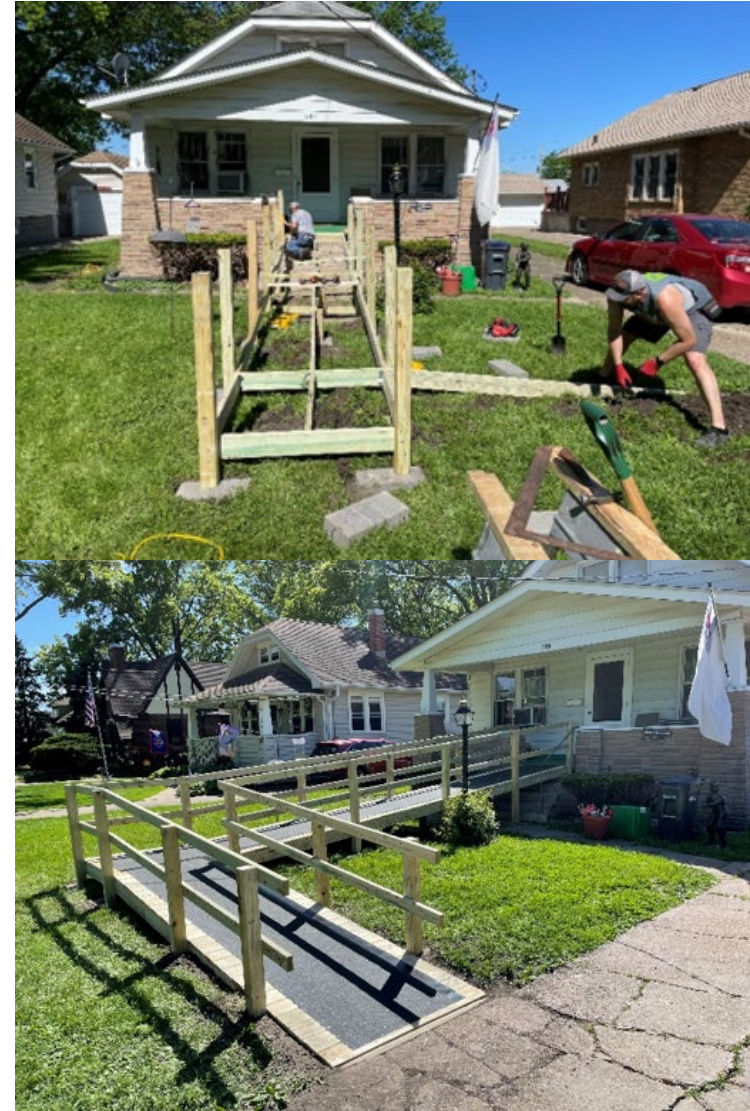
# Furnaces

- 11 Repairs
- 59 Replacements



# Senior Home Repair

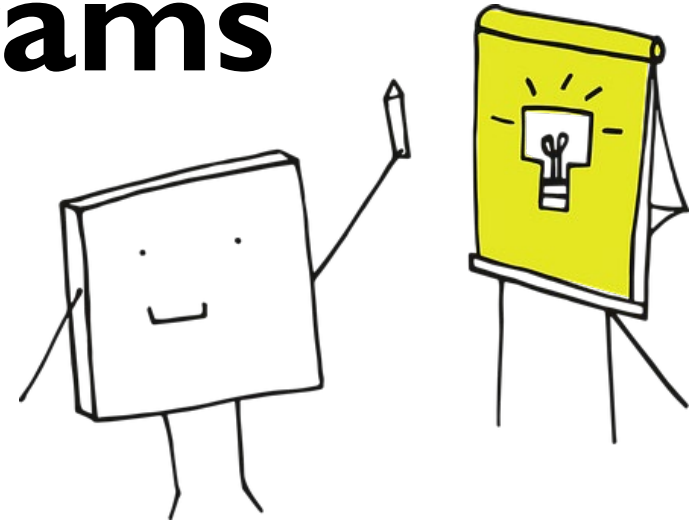
- For those aged 60+
- Funded through Milestones Area Agency on Aging
- **61** Households helped to remain safely in their homes





# Education Programs

- Head Start
- Early Head Start
- Preschool Scholarships
- Family Development and Self Sufficiency (FaDSS)
- Employment Counseling
- General Information and Referral
- Parents as Teachers – ended 6/30/22



# Head Start: 187 Children

Children and families are educated, challenged and empowered to embrace their potential for success in life.

- 3-5 Year olds
- Preschool and child development program
- Nationally certified
- Free for qualifying families
- Part-day 3.5 hours or full day 6.5 hours



# Early Head Start: 84 Children

- Prenatal – 3 Years Old
- Child care and child development program
- Nationally certified
- Free for qualifying families
- 6.5+ hours of care per day







# OBJECTIVES

Head Start and Early Head Start are programs where children and families are educated, challenged and empowered to embrace their potential for success in life. One child, one family at a time.

Head Start is a federally funded, non-profit program dedicated to providing quality school readiness and family support services to those of low income.

## Parent Involvement

We encourage family members to be involved in any and all aspects their child's experiences throughout the school year.

Families plan and participate in special events at the centers. Family Nights are events that local center committees plan to support family learning and togetherness.

Families are involved in the decision-making process as members of their local Center Committees where they make decisions about the program.

## We are committed to:

- Excellence in the preparation of our children for school and life.
- Ensuring all students have an equal opportunity to learn.
- Each student having access to an effective teacher.

## School Readiness

Assessments help establish a baseline, identify goals, and identify areas of growth for each individual child.

Kindergarten transition activities help prepare children to transition from our program to a school district kindergarten classrooms.

Family Specialists assist families in: finding kindergarten round-ups, learning how to advocate for their child, activities to help prepare for this transition, and more.

Research shows attendance patterns and habits formed when children are in preschool and kindergarten continue later in their school careers; these same patterns are indicators of future success in school and conversely school drop-out rates



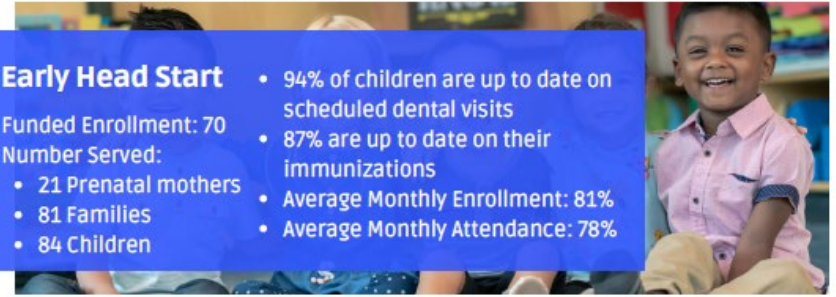
# 2021-2022

## Early Head Start

Funded Enrollment: 70  
Number Served:

- 21 Prenatal mothers
- 81 Families
- 84 Children

- 94% of children are up to date on scheduled dental visits
- 87% are up to date on their immunizations
- Average Monthly Enrollment: 81%
- Average Monthly Attendance: 78%



## Head Start

Funded Enrollment: 264  
Number Served:

- 176 Families
- 187 Children

- 121 children received preventative dental care in the program year
- 96% are up to date on their immunizations
- Average Monthly Enrollment: 68%
- Average Monthly Attendance: 76%



## Children 0 - 4 in Poverty in Southeast Iowa

There are 1,511 children below 100% Federal Poverty Level (FPL)

-2016-20 American Community Survey

Head Start/Early Head Start served 18% of those children (271)







**Head Start  
& Early Head Start**  
Community Action of Southeast Iowa

**Program Year:**  
**September 2021**  
**– August 2022**



**Head Start  
& Early Head Start**  
Community Action of Southeast Iowa

# PROGRAM REVIEW

## FEDERAL HEAD START GRANT FUNDING

	Proposed Budget	Expenditures
Personnel	\$1,994,043	\$1,994,043
Fringe Benefits	\$981,478	\$981,478
Travel	\$3,984	\$3,984
Supplies	\$66,628	\$66,628
Contractual	\$32,500	\$32,500
Other	\$303,571	\$303,571
Indirect Costs	\$421,333	\$421,333
<b>Total</b>	<b>\$3,803,537</b>	<b>\$3,803,537</b>

Our audit, completed by Meriwether, Wilson & Company, P.L.C., showed 100% compliance!

## ADDITIONAL FUNDING

Covid ARP	\$399,631
COVID CRRSA	\$100,524
CACFP	\$146,375
CACFP COVID Supplement	\$14,462
DHS COVID Stipend	\$17,000
ECI Lee and Van Buren County	\$13,242
Donated Space, Services, and Materials	\$417,775
Miscellaneous Monetary Donations	\$611

Volunteers and donors provide crucial support for our programs. Professionals donate their time in their specialties in classrooms, maintenance, and in various areas across the program.

Donated items come from individuals, community groups, and local businesses. Contact us about how you can contribute this coming year to support local children and communities.



### Our Head Start program is in compliance in all areas.

In our review, we were specifically commended for our:

- Management, oversight, and governance within our program.
- Curricular alignment, strategies to ensure school readiness, and supporting teachers to implement the curriculum.
- Ensuring delivery of high-quality health services and maintaining safe, healthy environments.
- Purposeful approach to develop families' self-sufficiency and strengthening their parenting skills.
- Attendance initiative to promote attendance as a pathway to improve long-term successful outcomes for children.
- Budget development and revision processes.

We continue to work on staffing and raising staff teacher credentials. This is an area of concern regarding designing quality education and child development program services.



# Preschool Scholarships

- Funded by Des Moines, Henry, Louisa, and Washington Early Childhood Area
- **41** Children provided scholarships
- When ineligible or on the waitlist for public preschool or Head Start



# Family Development and Self Sufficiency

- 126 Households received support
- A home visitation program for low income families
- Voluntarily and free services
- To address basic needs, improve child well-being, and develop career opportunities



*Community*  
**Action**  
OF SOUTHEAST IOWA

# Employment Counseling

- **208** Individuals provided with job leads, direction, and resources





# General Information and Referral

- **1,457** individuals provided referrals and other resource information
- **1,631** Resource Guides for Des Moines and Lee County provided



*Community  
Action*  
OF SOUTHEAST IOWA

**2022  
Des Moines  
County  
Resource  
Guide**



This can be found online at:  
<http://caofseia.org/resources/>

# Parents as Teachers



Parents as Teachers®

- **15** Households with **36** individuals received support
- Funded by Des Moines, Henry, Louisa, and Washington Early Childhood Area
- Program ended at our agency 6/30/2022



*Community*  
**Action**  
OF SOUTHEAST IOWA

# Other Assistance



- **40** Households assisted with in depth budget counseling
- **67** Households helped with transportation assistance
  - Bus tokens & Bus passes
  - Gas vouchers
    - Louisa County United Fund of Columbus Junction
- **82** Children provided NEW shoes
  - Shoes for Kids
    - Lee County Youth Services Grant

# Hygiene Assistance

- 1,115 Individuals provided items for cleanliness
- Dependent on donations and grants



*Community*  
**Action**  
OF SOUTHEAST IOWA



In fiscal year 2021-2022

- 108 requests
- 72 households assisted
- Various unmet needs
- Max of \$750/household

Sponsored by:

**Des Moines Register**  
PART OF THE USA TODAY NETWORK

Contributions processed by:



Categories of assistance

- Beds
- Appliances
- Miscellaneous
- Rent
- Home repairs
- Medical expenses (including pharmacy or dental)
- Car repairs
- Utilities
- Clothing





# Paint-A-Thon

- Community Collaborations
  - Applications & repairs
- Fort Madison
  - 4 homes in July 2022
- Burlington
  - 8 homes in September 2022

## Before



**Burlington  
Paint-A-Thon 2022**

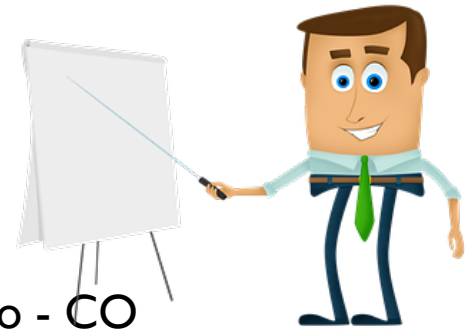
## After



**Community  
Action**  
OF SOUTHEAST IOWA



# 2022 Presentations



- Des Moines Co Baby shower - WIC
- Lee Co Children's First ECI – ML
- Lee Co Children's First ECI - KL
- Louisa Interagency – RA
- SCC student support staff – RA
- Fort Madison Water Department – LN
- Donnellson Water Department – LN
- 5<sup>th</sup> graders career fair – RA
- 8<sup>th</sup> graders career fair – RA
- SCC class, CACFP – ML
- Miller Meeks Rep – LN
- Harmony Bible – LN
- Ed Stone teachers - LN
- Paint-A-thon committee – JB
- Com Health Clinic Nurses - LN
- Keokuk mayor – LN
- Keokuk middle school – LN
- Baby Shower Lee Co - CO
- Hope Haven – LN
- Baby shower DMCo - CO
- Foster Care Review Board – RA
- Younhouse – LN
- SEIA Regional Landlord Association – LN
- SCC Career Fair 5<sup>th</sup> & 8th graders – RA
- Lee Co Foster Care Review Board – RA
- Lee Co General Relief - LN





# Giving

- **\$487,758** in private donations
- **\$417,775** in-kind services donated
- **403** Volunteers donated **1,657** Hours
- Volunteer opportunities in:
  - Head Start Classrooms
  - Food Pantry
  - Special Projects
  - Donations
    - Pantry Items
    - Finances
    - Contact your local center

- 2022 CSBG Report



# 269 Partnerships



- We are stronger together.
- Those in poverty have a variety of needs and it takes the community working together to help.
- Thank you to our many partners!
- A variety of resources can be found on our website: <http://caofseia.org/resources/>



*Community*  
**Action**  
OF SOUTHEAST IOWA



# Website: [caofseia.org](http://caofseia.org)



Helping People. Changing Lives.

ABOUT US

## Home

### Apply for Energy Assistance/LIHEAP

You can start an application online here. Or call your local center for a phone appointment. See our webpage on the Low Income Home Energy Assistance Program (LIHEAP) for details on what you need to submit, income guidelines, and more information.

### Fundraiser

We're selling Rada Cutlery to raise money for our agency public relations committee. Support us by shopping at this link: <https://radafundraising.com/?fan=4574788515745d> before Nov 16, 2020. When ordered before November 15th products should arrive before Christmas if you want to order presents. You may also order at our Central Office through the catalog. Payment is due when ordering. Products include: kitchen utensils...



As BCSD Burlington Community School District plans to go virtual, our Head Start classrooms will continue with in-person services for as long as possible to benefit the children educationally and emotionally. See the letter below or on our website for more details: [caofseia.org/services/head-start/](http://caofseia.org/services/head-start/). The school district will also be providing curbside pickup for meals in Burlington.



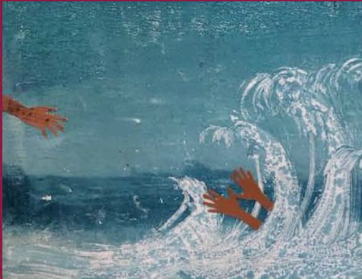

View on Facebook · Share





# Find monthly reports on our website

<http://caofseia.org/about-us/reports/>

<b>Sept 2022</b>	<u>Water</u> <b>111</b> Households had assistance maintaining or reconnecting their water service through the Low Income Home Water Assistance Program	<u>Food Assistance</u> <b>1,186</b> Individuals provided food through our five local center food pantries	<u>Rent</u> <b>17</b> Households assisted with rent payments in maintaining their residence
<u>Family Partnerships</u> <b>67</b> Families supported in their goals with the Family Development and Self Sufficiency Program	<u>Head Start &amp; Early Head Start</u> <b>225</b> Children participating in early childhood education	<u>Childcare</u> <b>64</b> Home childcare providers empowered and financially strengthened to offer quality nutrition	<u>WIC</u> <b>2,764</b> People receiving benefits and education through the Special Supplemental Nutrition Program for Women, Infants and Children (WIC)
	<p><b>“[Community Action] helped with bills when we were facing shut off and has helped with food when we were out.”</b></p> <p>- Response 11.296 from our 2021 Client Satisfaction Survey</p>		

Welcome to our Newsletter.

Keep up with happenings, learn about us, the community, and poverty as we partner to help people and change lives in southeast Iowa.

### Success



### Weatherization

"Miss Lisa is 75 years old, lives alone, owns her home, and makes do on social security and a small pension. She was chosen to have her home weatherized as her utility bills were quite high, around \$300 - 400 a month. Our weatherization team worked on her home putting in new insulation and a new furnace. Her bills went down drastically, to between \$59-79. "I couldn't be any happier and I thank you all for that!"

On average, our weatherization program saves homeowners and renters an average of **\$328** a year on utility costs. Some homes, like \*Miss Lisa's see more drastic savings.

\*Name changed for confidentiality

Around 60 homes are weatherized each year by Community Action in southeast Iowa. This raises home values, lowers utility bills for customers, makes homes safer, and reduces the energy burden.

Learn more about the [Weatherization program on our website](#).

### Helping People, Changing Lives

### Video Highlight



Each of our local centers are responsive to local conditions and needs. Contact your local center if you are in need of assistance.

### Learn



### Housing

We all need a place to live. A roof over our head and somewhere safe to sleep at night. Housing is a basic need of all people.

The uncertainty that one's housing may disappear in a day or a week or a month can cause [survival/poverty stress](#). When you face housing insecurity, wondering how or where you'll sleep next depletes lots of time and energy, leaving few resources for much else.

In our communities many struggle to find affordable housing. Their dollars are stretched beyond what they're able to consistently afford. Living paycheck to paycheck, many are tossed in a tizzy if something unexpected comes up. We know, something unexpected always comes up. Life is full of changes and rarely goes how we plan.

### Tips

- Save as much as you can to have at least a small emergency fund for the unexpected.
- Cultivate friendships. Be a friend and hopefully you'll have a friend when you need one too.
- Are you just starting out? Sometimes a roommate situation can be helpful. Make sure you establish some healthy guidelines so you're both safe and secure in your living environment.
  - [Here's some advice from Iowa Legal Aid](#) about roommate situations.
- Look into subsidized rentals: low-rent housing vouchers, Section 8, or apartment complexes based on your income.
- If you can save a little, think about buying a home. Talk to a bank or credit union about your options. Buying a home can lower monthly costs and help build wealth. There can be repair costs, but it could be a place of your own to invest in.
  - HUD offers [some helpful things to consider](#) when buying a home.
- If you're homeless try out some of [these resources listed on this one-page flyer](#)
  - Or [these for those in Des Moines County](#)
  - Or check out our [Homeless Assistance Webpage](#)

If you are struggling with housing, reach out. Our agency and others have some resources that might help or start you down a sustainable path:

- Emergency Rental Assistance
- Emergency Utility Assistance
- Emergency Solutions Grant (ESG) housing help
- Senior Home Repair
- Weatherization
- Furnace Repair and Replace
- Low Income Home Energy Assistance Program (LIHEAP)
- Low Income Home Water Assistance Program (LIHWAP)

In fiscal year 2020, **\$4.4 Million** was put into housing assistance programs through our agency in southeast Iowa.

We also partner with other local agencies for positive housing outcomes.

- [Iowa Finance Authority \(rent, mortgage, and utility assistance\)](#)
- [Burlington Area Homeless Shelter](#)
- [Emma Cornelius Shelter in Fort Madison](#)
- [Domestic Violence Prevention Program \(DVIP\)](#)
- Local landlords (many are listed on the [county's landlord list on our website](#))
- [Salvation Army](#)

# Email Newsletter

- [Sign up](#) on our website
- Short monthly updates
- Successes, highlights, resources, learning, and more.

# Community Action OF SOUTHEAST IOWA



**Community Action of Southeast Iowa**  
@CommunityActionofSoutheastIowa - Nonprofit Organization

Home About Events Jobs More

Manage your Page and Instagram account together with Business Suite.

**Insights** (Last 28 days: Oct 8 - Nov 4)

- People Reached: 8,885
- Post Engagements: 1,393
- Page Likes: 19

**About**

2850 Mt Pleasant St, Site 108 Burlington, IA 52601

Promote your business locally to lead people directly to 2850 Mt Pleasant St, Site 108 Burlington, IA 52601.

At Community Action of Southeast Iowa, we believe in individuals and their abilities and potential. We also believe that creating stronger, more self-sufficient individuals and families benefits the entire community. Founded in 1965.

1,251 people like this  
1,307 people follow this  
21 people checked in here  
<http://www.caofseia.org/>

(319) 753-0193  
Typically replies within a day

community.action@caofseia.org

**LIHEAP SAVES LIVES**

**LIHEAP HELPS FAMILIES AFFORD THEIR HOME ENERGY BILLS.**

1,260 People Reached 73 Engagements

- Help us spread the word
- Share area information
- Information on successes and results
- Highlight partnerships
- Information





# Helping People & Changing Lives in Southeast Iowa



*Community*  
**Action**  
OF SOUTHEAST IOWA

# Community Action of Southeast Iowa

Central Office

Phone: 319-753-0193

[Community.Action@caofseia.org](mailto:Community.Action@caofseia.org)

2850 Mt Pleasant Street, Suite 108

Burlington, Iowa 52601

