

Following you will find the annual report from FaDSS FY2022.

The data contained within the report reflects outcomes for families who exited the FaDSS program between July 2021-July 2022.

This past fiscal year was a challenge for us as we faced staff shortages and multiple changes within the program. I am pleased to report that despite these challenges our agency has continued to have a positive impact on the 118 families served during the past program year.

It is important to note that the data contained within the report reflects data collection from the 66 families who exited the program in FY2022.

### **Program Performance- State Contact Measures**

As you examine the data you will notice there are three columns. The first column (CASEIA FY22) shows our percentage based on end of year data. The second column (FY22 Target) is our individual target as an agency (based on data from the past, as well as individual characteristics in our area), the third column (State FY22 Average) represents the state average calculated from all FaDSS agencies.

We scored above state average in assisting families with work preparedness and addressing mental health concerns. Income, substance abuse, child care, and transition services were all within a few points of the state average, with involvement in early childhood programming falling significantly below the state average.

As a result of this data our program has incorporated an individualized goal around early childhood education for FY23. We have already begun tracking this data and early data indicates improvement in this area.

### **Program Performance- Local Program Goals**

Each year our agency identifies individual goals to work on. In FY22 our program included special focus on data surrounding improved transportation, improved housing, and improved childcare (*Goal: To Understand changes in Family Stability Measures*). We also studied the percent of families showing an increase of income (*Goal: To have families successfully exit out of the FaDSS and become self-*

*sufficient*). Finally, our program studied the percentage of families fully utilizing FaDSS services with the goal of understanding how families engage with us (*Goal: To understand how families engage with FaDSS services*).

Quarters 1-4 are cumulative, with the end of year data found in Quarter 4. Again, the “target” data is based on individual agency need and prior outcomes, whereas the state average shows the average across the state of IA in these domains.

As you will see, we are significantly below average in areas of transportation and childcare. Barriers within our community are likely to influence this number (lack of transportation options and lack of childcare facilities in many of our rural areas).

We are significantly above state average in the area of housing, and consistent with the state average in the area of increased income. The data also indicates we are above average in the number of contacts we make with families, the number of families that utilize transitional services, and the length of stay within the program.

The “.9” found under “number of monthly home/quality visits contact provided” may indicate that our program struggled with this in the past, but has shown improvement in the most recent program year.

Overall, this data suggests that our program is keeping families enrolled in the FaDSS program for a longer period of time, and also providing attentive contact to each family within the program. Given that our program was understaffed for many months, this speaks highly to the quality of services our FaDSS specialists are providing.

Throughout the remainder of the report you will find data broken down into various categories, which are explained in detail throughout the narrative. Please reach out if you have any questions or would like to discuss further.

**Joy Szewczyk**

Community Action of Southeast Iowa FaDSS Coordinator

319-753-0193 [Joy.Szewczyk@caofseia.org](mailto:Joy.Szewczyk@caofseia.org)



# COMMUNITY ACTION OF SOUTHEAST IOWA

## PERFORMANCE AND OUTCOMES REPORT FOR THE FAMILY DEVELOPMENT AND SELF-SUFFICIENCY PROGRAM

STATE FISCAL YEAR 2022

### PREPARED BY

Iowa Department of Human Rights  
Lucas State Office Building  
321 E. 12th Street  
Des Moines, IA 50319

---

515.242.5655  
<https://humanrights.iowa.gov>

## INTRODUCTION

Iowa's Family Development and Self-Sufficiency Program (FaDSS) was created by the 1988 General Assembly to assist Family Investment Program (FIP) families with significant or multiple barriers reach self-sufficiency. FaDSS provides services that promote, empower, and nurture families toward economic self-sufficiency and family stability.

Participation in FaDSS is a voluntary option for families participating in the Family Investment Program (FIP). Eligible families are identified and referred to the program primarily by Iowa Workforce Development's PROMISE JOBS program. However, referrals to FaDSS may also originate with the Department of Human Services, other social service providers, or as self-referrals. Beginning in July 2019, FaDSS began serving families who are not mandated to participate in the PROMISE JOBS program.

The program is provided to families in Des Moines, Henry, Lee and Louisa counties through a partnership with Community Action of Southeast Iowa.

Utilizing a strengths-based approach, the program is delivered to families through home visits with certified Family Development Specialists. Core services include assessment and screening, family-driven goal setting, referrals to community resources and supports, and advocacy and self-empowerment.

## CONTINUOUS QUALITY IMPROVEMENT

The FaDSS program is committed to providing high quality, effective services for families. To that end, program leadership meet each quarter to review performance on select contract measures and family outcomes with the goal of identifying 1) areas where the program is achieving desired results and 2) opportunities to implement responsive changes to practice to ensure the program is on track to meet year-end targets. This report provides an overview of the performance and outcomes data reviewed for each quarter. Statewide performance data is provided where appropriate for comparison purposes. All data provided in this report should be interpreted in light of unique program considerations as well as community factors that may affect performance and outcome measures.

## EVALUATION METHODOLOGY

The Iowa Department of Human Rights, in partnership with Community Action of Southeast Iowa, gathers a wealth of data related to program performance and self-sufficiency outcomes for families. Information about participants is collected by Family Development Specialists using the Self-Sufficiency Matrix, a tool that measures changes in 14 life domains. Demographic characteristics and information about the specific activities and services completed with families are also gathered. Together, this information allows the FaDSS program to:

- Understand family characteristics, including assets and barriers to self-sufficiency;
- Assess changes in family self-sufficiency and stability domains over the course of enrollment;
- Build upon program success and consider areas for further focus.

## A NOTE ON THE DATA PRESENTED

In March of 2020, the State of Iowa declared an emergency public health disaster due to COVID-19. As a result, the FaDSS program implemented a series of rapid-response adjustments to ensure the safety of all staff and families served, including a requirement that programs provide virtual home visits only and the extension of transition services for up to 60 days after the end of the emergency declaration. FaDSS services were delivered virtually from March 17, 2020 through April 15, 2022. Extended transition services were offered through April 15, 2022. All data are based on families that have completed the program.

## PROGRAM EQUITY & COVID-19 RECOVERY

- At the direction of the FaDSS Council, the program began concerted efforts to apply an equity lens to service provision with the formation of a FaDSS Equity Committee. All policies and practices are reviewed with an equity lens and focused efforts to engage FaDSS workers in ongoing discussions and learning are being implemented statewide.
- As we continue to realize the impacts of COVID-19 on all Iowans, specific attention is being drawn to the disproportionate impact for low-income, marginalized and other under-served communities. This creates the opportunity to center the voices of families in addressing equitable economic recovery strategies.

## NUMBER OF FAMILIES SERVED

At any point in time, the Community Action of Southeast Iowa FaDSS program may serve 75 families. In Fiscal Year 2022, a total of 118 families received services. 66 families completed or were exited from the program during the reporting period, including 138 children (under the age of 18).

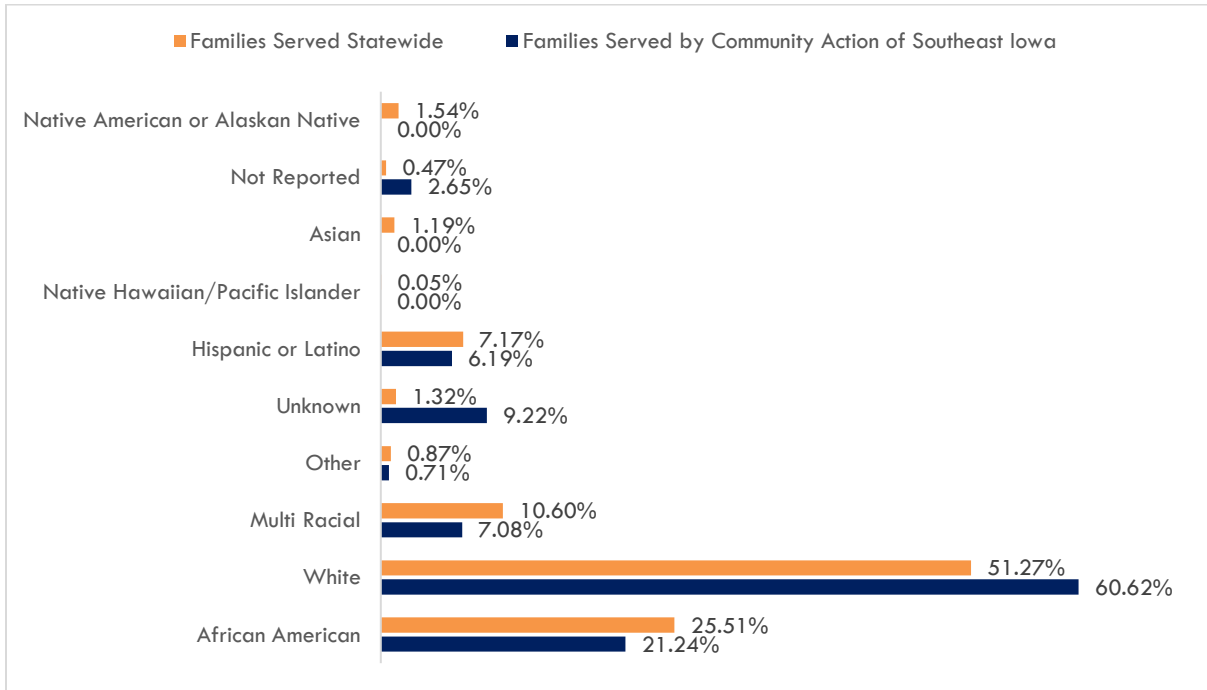
## CHARACTERISTICS OF FAMILIES SERVED

Demographic information about FaDSS participants is collected at the family (rather than individual) level, though the program often narrows in on characteristics of the designated “Head of Household” to identify and understand trends related to family structure and progress toward self-sufficiency. Overall, eighty-eight percent of families are headed by a female; fifty-nine percent are headed by an individual aged 24-34. Figure 1 below provides insight into the racial and ethnic composition of FaDSS families served by Community Action of Southeast Iowa. Statewide, families of color are disproportionately represented in the FaDSS program when compared to Iowa’s general population, though the disparity is reflective of the broader representation of families of color in the Family Investment Program (FIP).<sup>1</sup>

---

<sup>1</sup> Source: Iowa Department of Human Services.

**Figure 1. Race and Ethnicity of Family Heads of Household**



**PROGRAM PERFORMANCE – STATE CONTRACT MEASURES**

Each quarter, program leadership meet to review performance on contract measures and identify opportunities to improve outcomes for families. The table below presents FY 22 performance for each contract measure, and includes the contract target and state average for comparison.

**Table 1. Contract Measures**

Contract Measure	CASEI FY 22	FY 22 Target	State FY 22 Average
Families involved in at least one work preparedness activity.	67%	70%	59%
Families exiting FaDSS with increased income.	43%	50%	47%
Adult family member(s) with a substantiated mental health barrier that accessed treatment.	100%	90%	89%
Adult family member(s) with a substantiated substance abuse barrier that accessed treatment.	78%	90%	83%

**Community Action of Southeast Iowa - Family Development and Self-Sufficiency Program**

Employed families with child care issues that have addressed those issues.	44%	60%	48%
Families with age eligible children (0-5) co-enrolled in an early childhood program.	28%	60%	43%
Families receiving transition services after the last month of FIP.	65%	65%	68%

**PROGRAM PERFORMANCE – LOCAL PROGRAM GOALS**

In addition to conducting regular reviews of performance on state contract measures, Community Action of Southeast Iowa leadership set and review performance and outcomes goals unique to the local program. Table 2 provides an overview of these goals and corresponding performance data. State performance data have been included for comparison.

**Table 2. Program Goals**

Indicator	Through Quarter 1	Through Quarter 2	Through Quarter 3	Quarter 4 (Year End)	Target	State Average
<i>Goal: To understand changes in family stability measures from enrollment to exit.</i>						
Percent of families that improved in the transportation domain when a goal was set.	50%	50%	33%	<b>33%</b>	<b>40%</b>	46%
Percent of families that improved in the transportation domain.	37%	30%	27%	<b>26%</b>	<b>30%</b>	32%
Percent of all families that improved in the housing domain when a goal was set.	75%	75%	78%	<b>71%</b>	<b>40%</b>	41%
Percent of all families that improved in the housing domain.	44%	44%	45%	<b>41%</b>	<b>25%</b>	32%
Percent of families that improved in the childcare domain when a goal was set.	0%	0%	0%	<b>21%</b>	<b>30%</b>	35%
Percent of families that improved in the childcare domain.	0%	11%	18%	<b>25%</b>	<b>25%</b>	30%
<i>Goal: To have families successfully exit out of FaDSS and become self-sufficient.</i>						
Percent of families who show an improvement (at any point during	54%	43%	46%	<b>46%</b>	<b>43%</b>	46%

FaDSS services) who set an employment related goal.						
Percent of families who show an improved (at any point during FaDSS service) related to employment (no goal set).	44%	41%	43%	<b>41%</b>	<b>33%</b>	41%
Percent of families who increased their income at exit (total).	44%	44%	47%	<b>46%</b>	<b>45%</b>	47%
<i>Goal: To understand how families engage with FaDSS services.</i>						
Number of monthly home/quality visits contact provided.	1.24	1.16	1.18	<b>1.13</b>	<b>0.9</b>	1.08
Percent of households utilizing full transitional (7 month) services.	37%	30%	47%	<b>48%</b>	<b>20%</b>	45%
Length of stay at community Action of SEIA FaDSS program.	13.93	13.47	17.73	<b>18.23</b>	<b>10</b>	17.76

**THE SELF-SUFFICIENCY MATRIX**

Families participating in the FaDSS program often face multiple barriers to self-sufficiency. Through an in-depth assessment process (including both formal and informal assessment), Family Development Specialists work with families to identify areas of strength that are then used to address barriers. The Self-Sufficiency Matrix provides a mechanism for program staff to measure changes in a family’s situation from entry (within 60 days of enrollment) to program exit. The Self-Sufficiency Matrix measures family stability across 14 life domains. Answering a series of questions for each family domain, Family Development Specialists rate stability on a scale of 1 through 5 based on his/her observation and assessment.

**Table 3. Self-Sufficiency Matrix – Domains**

1. Housing	8. Parenting, Nurturing and Attachment
2. Transportation	9. Child Care
3. Mental Health	10. Support of Child Development
4. Substance Abuse	11. Adult Education
5. Health	12. Language
6. Income	13. Support Network
7. Employment	14. Relationship with Partner

**Figure 2. Self-Sufficiency Matrix - Stability Scale**





**SELF-SUFFICIENCY MATRIX RESULTS**

By comparing scores for each life domain at entry and at exit, we gain insight into the cumulative impact of FaDSS services on self-sufficiency and stability measures. For the current reporting period, 65 families had both entry and exit scores<sup>2</sup>. Additional performance data are included in a discussion of select domains to lend both context and supporting information about changes in family stability and self-sufficiency measures.

Table 4 presents changes in pre-/post- Self-Sufficiency Matrix life domains. When interpreting the data below, it is useful to consider several key factors: 1) the average entry score may impact both the average change and the percent of families that saw improvement in a domain. For example, when the average entry score is high, families may not have much room for further improvement. Conversely, when the average entry score is considerably low (i.e. at “Vulnerable”), significant scaffolding of supports may be necessary even to achieve stability, or no change, from entry to exit; 2) While our goal is to leverage FaDSS services to achieve positive outcomes across all life domains, community factors may play a significant role in whether a family achieves improvement. This may be particularly salient for domains such as housing, transportation, and child care. Overall, any review of pre-/post- Self-Sufficiency Matrix changes should include these and other local considerations.

**Table 4. Pre-/Post- Changes in Family Stability and Self-Sufficiency Measures**

Domain	Overall Domain Changes – Head of Household					Targeted Domain Changes <sup>3</sup> - Head of Household		
	Average Entry Score	Average Exit Score	Average Change	Percent Improved	Percent Improved - State	Average Change	Percent Improved	Percent Improved - State
Housing	2.97	3.65	+0.68	41%	32%	+1.41	71%	41%
Transportation	3.63	3.78	+0.15	26%	32%	+0.38	33%	46%
Mental Health	3.14	3.45	+0.31	37%	23%	+0.37	54%	31%
Substance Abuse	3.68	3.85	+0.17	21%	11%	-0.44	33%	29%
Health	4.00	4.37	+0.37	35%	28%	-0.13	25%	36%
Income	2.42	2.34	-0.08	25%	27%	-0.10	27%	29%

<sup>2</sup> The FaDSS program launched a new data collection system, Iowa FaDSS, on July 1, 2016. Self-Sufficiency Matrix data for families that enrolled prior to July 1, 2016 were not migrated from the legacy data collection system. Therefore, for the current reporting period, only families that enrolled after July 1, 2016 and exited by June 30, 2022 could be included in this analysis.

<sup>3</sup> Targeted domains are domains for which the specialist and family set one or more goals to address identified barriers.

<b>Employment</b>	1.32	2.40	+1.08	<b>41%</b>	41%	+1.19	<b>46%</b>	46%
<b>Nurturing and Attachment</b>	4.48	4.42	-0.06	<b>17%</b>	20%	-0.82	<b>9%</b>	28%
<b>Childcare</b>	2.38	2.67	+0.29	<b>25%</b>	30%	+0.15	<b>21%</b>	35%
<b>Support of Child Development</b>	3.68	4.02	+0.34	<b>32%</b>	31%	+0.28	<b>43%</b>	39%
<b>Adult Education</b>	1.83	2.09	+0.26	<b>18%</b>	11%	+0.25	<b>25%</b>	17%
<b>Language</b>	5.00	5.00	0.00	<b>0%</b>	24%	0.00	<b>0%</b>	37%
<b>Support Network</b>	2.69	3.17	+0.48	<b>37%</b>	39%	+0.28	<b>33%</b>	56%
<b>Relationship with Partner</b>	3.70	3.65	-0.04	<b>17%</b>	18%	-0.75	<b>14%</b>	21%

**HOUSING**

Taking a deeper look at the housing domain, we can see that as a whole, families entered with an average score of 2.97, approaching “safe.” Thirty-seven percent of families set goals related to their housing situation. Families setting goals improved in the housing domain at a significantly higher rate than all families.

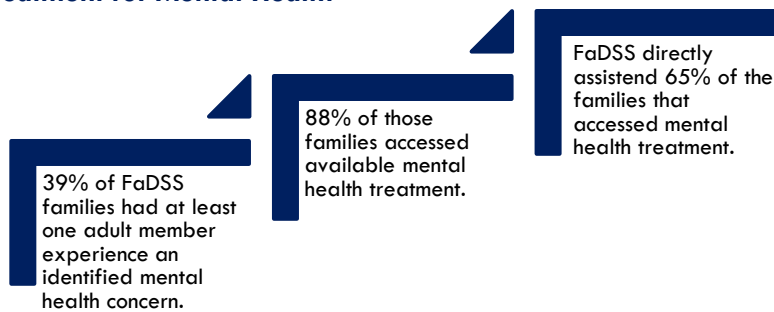
**TRANSPORTATION**

Families entered the FaDSS program with an average transportation score of 3.63, or between “safe” and “building capacity.” Twenty-eight percent of families set a goal related to transportation; of those that did, thirty-three percent showed improvement compared to twenty-six percent of all families.

**MENTAL HEALTH**

The mental health domain presents a more complex picture of family stability. Families entered the program with an average score of 3.14 “safe.” Thirty-seven percent of families set a goal related to addressing mental health needs; for those that did, the average entry score was lower at 2.17 (“vulnerable”). Fifty-four percent of families who set goals saw improvement compared to thirty-seven percent of families overall.

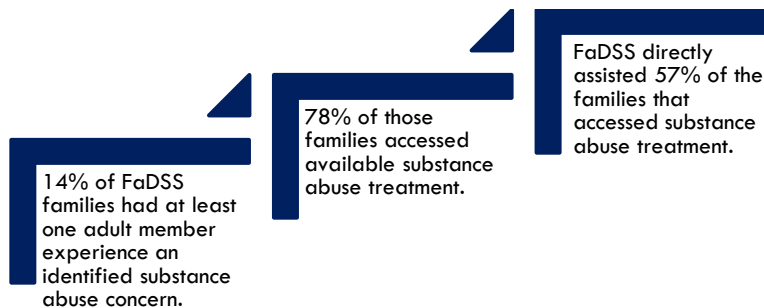
**Figure 3: Access to Treatment for Mental Health**



### SUBSTANCE ABUSE

Similar to mental health, the substance abuse domain can provide useful, though complex insight into family stability. A review of data for this domain demonstrates that families enter the program with an average score of 3.68, in the “safe” category. A relatively small percentage of families (fourteen percent) chose to set goals for improvement in this domain. Of those that did, the average entry score was significantly lower, at 3.11, in the “safe” category. Similar to mental health, scores overall remained steady from enrollment to exit. As with mental health, substance abuse screening may be both formal and informal, and may occur as appropriate at any point during enrollment. It is possible that Family Development Specialists identified the presence of substance abuse concerns after the initial Self-Sufficiency Matrix was administered. As with mental health, the role of the Family Development Specialist is strictly to screen for the presence of substance abuse and connect families to qualified resources and supports.

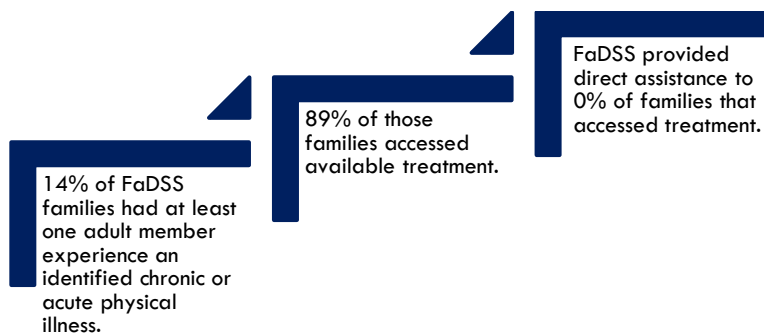
**Figure 4: Access to Treatment for Substance Abuse**



### HEALTH

Families entered the FaDSS program with an average score of 4.00 “building capacity.” Overall, families exited with higher scores, at 4.37. Twelve percent of families chose to set a goal for this domain. While the FaDSS program measures family progress in this domain, it is generally approached in terms of facilitating family access to appropriate, qualified health professionals.

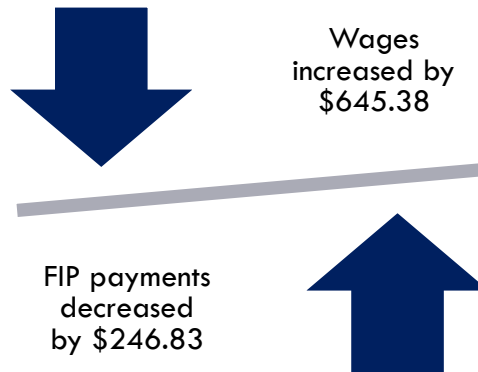
**Figure 5: Access to Treatment for Chronic and Acute Physical Illness**



**INCOME**

As might be expected, families tended to enter the FaDSS program with much lower scores in this domain (the average score was 2.42 or “vulnerable”). The average score at exit was 2.34; still within the “vulnerable” range, though improved over scores at entry. Eighty percent of families set income-related goals; of those that did, they achieved similar results to all families in this domain. It is worth noting that the income domain is directly related to earned wages. To put this into further context, the “in crisis” category applies to families between 0% and 100% of poverty by family size.

**Figure 6: Changes in Monthly FIP and Wages from Entry to Exit**



Narrowing in on families employed at exit (fifty percent), we see that the average monthly wage was \$1,511.40 (an increase of \$1,353.23).

**EMPLOYMENT**

Supporting families as they seek and obtain employment is a cornerstone of the FaDSS model. Families entered the FaDSS program with an average score of 1.32, within the “in crisis” range for the employment domain. At eighty percent, this domain had the highest rates of goal setting. Families saw similar levels of improvement regardless of goal setting or not for this domain. The FaDSS program provides a number of formal and informal supports related to employment. Figure 7 below provides a detailed look at these activities.

**Figure 7: Job Preparedness Activities**



At entry, eleven percent of families were employed; by exit, fifty percent had achieved employment. Reviewing family progress for both the employment and income domains together, it is clear that FaDSS is effective in supporting families to obtain employment, though improvements in income suggest that overall wages earned remain lower.

#### *PARENTING, NURTURING AND ATTACHMENT*

Families enrolling in FaDSS tended to score relatively high in the parenting, nurturing and attachment domain. With an average incoming score of 4.48, parents were generally considered to be “building capacity” in terms of their parenting ability and relationship with their children. Overall, seventeen percent of families set a goal related to this domain. When this domain was targeted, families tended to see less improvement in scores at exit. During services specialist may have helped the family address situations in this domain that may not have been discussed at entry. The FaDSS program, unlike many family support programs, may provide support to families even when child safety comes to the attention of child protective services. Of families completing the FaDSS program in Fiscal Year 2022, nine percent had an active child abuse case at some point during their enrollment.

#### *CHILD CARE*

This domain applied to thirty-seven percent of families, meaning that they had a child that would require child care. However, access to child care is often a significant barrier to employment and self-sufficiency for families with young children. The average score at entry was 2.38 “vulnerable.” Fifty-eight percent of families for whom this domain applied set a goal related to child care; of those that did, entry scores averaged 2.23. Families achieved improvement at slightly lower rates for this domain when a goal was set (twenty-one percent of families with targeted goals saw improvement while twenty-five percent of families overall saw improvement). FaDSS was able to provide direct assistance in obtaining child care to fifty-five percent of employed families for whom this was a barrier.

#### *SUPPORT OF CHILD DEVELOPMENT*

The average score at entry was 3.68, between “safe” and “building capacity.” Eleven percent of families set a goal related to child development; of those that did, entry scores averaged 3.43. Families that targeted this domain achieved improvement at higher rates than that of all families. It should be noted, the FaDSS program engages families in formal screening for developmental delays for all children ages 0-5. Using the Ages and Stages Questionnaire (ASQ-3 and/or ASQ SE: 2), the FaDSS program conducted screening with ninety-one percent of families with an age-eligible child (seven percent of children screened were identified as positive for a developmental delay). Overall, twenty-eight percent of families with age-eligible children also participated in an early childhood program.

#### *ADULT EDUCATION*

For families enrolling in FaDSS, the average score for adult education was 1.83, approaching “vulnerable.” For this domain, it is worth noting that a score of 2 indicates that the head of household has achieved either a high school equivalency diploma or has graduated from high school; a score of 3 indicates that the head of household attends college, community college, or a job/technical training program. Thirty-seven percent of families set a formal goal for this domain. Overall, twenty-three percent of adult heads of household improved their level of educational attainment.

#### *LANGUAGE*

The language domain measures changes in literacy for a family’s native language and progress toward bilingual fluency. This domain is not completed for English-speaking adult family members; less than one

percent of families were scored for changes in language. Overall, the data available for this domain are insufficient for analysis.

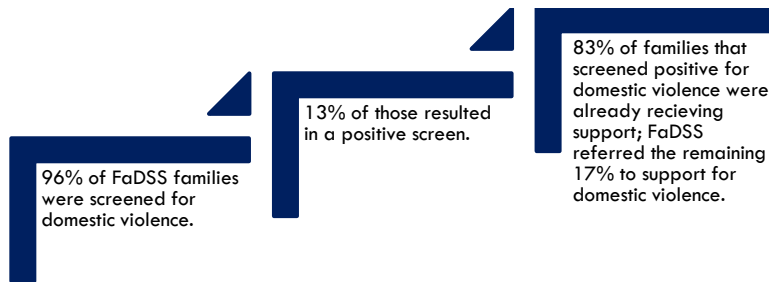
### SUPPORT NETWORK

This domain measures family access to both formal (i.e. social service programs) and informal (i.e. family and friends) supports. The average score at entry for this domain was 2.69, between “vulnerable” and “safe.” Twenty-eight percent of families set a goal related to their support network; of those that did, they achieved similar results than those of all families in this domain.

### RELATIONSHIP WITH PARTNER

As with the child care and language domains, the relationship domain considers a smaller number of families for changes from entry to exit. This domain is completed for heads of household based on current and past relationships (within six months prior to completion of the entry Self-Sufficiency Matrix). For the current reporting period, data for this domain are available for thirty-five percent of families with Self-Sufficiency Matrix scores. At entry, families averaged a score of 3.70, between the “safe” and “building capacity” category. Exit scores averaged slightly less for all families (3.65). Thirty percent of families set a formal goal related to this domain; those that did entered the program with a lower score than all families (3.25). The FaDSS program engages families in formal screening for domestic violence within the first ninety days of enrollment. Figure 8 below provides an overview of screening activities completed in Fiscal Year 22.

**Figure 8: Screening for Domestic Violence**



### CONCLUSION

The Community Action of Southeast Iowa FaDSS program works diligently to provide high-quality, supportive services to families participating in the Family Investment Program. The data presented above reflect the program’s commitment to achieving improved outcomes for parents, children, and families as a whole.